



# Bushfire Management Plan

Ardmore Park Quarry

Published August 2018

## Table of Contents

Document History .....	2
Introduction .....	3
Bushfire Risk Assessment.....	3
Potential Sources of Ignition.....	4
Fire Risk Management Measures.....	4
Responsibilities .....	5
Quarry Manager.....	5
Environmental Officer.....	5
Fire warden: .....	5
Other employees: .....	6
Bushfire Emergency Procedure .....	6
Site Information and Contacts .....	6
Emergency Contact Details .....	6
Emergency Assembly Point.....	7
Bushfire Emergency Triggers and Procedures .....	7
Review and Reporting.....	7
Site Map .....	8
Vegetation Map .....	9

## Document History

Version	Date	Author	Description of Changes
Draft	6/08/2018	Alexander Cox	Creation of Document.
Draft v2	7/08/2018	Alexander Cox	Correction of grammatical mistakes. Revised guidelines on hot works permits during total fire bans.

## Introduction

Multiquip Aggregates operates the Ardmore Park Quarry site located at 5152 Oallen Ford Road Bungonia. This bushfire management plan was developed to:

- Describe the response Multiquip will take in the event of a bushfire.
- Describe the precautionary activities by which Multiquip minimises the risk of a fire on the premises.
- Satisfy the requirements of condition 40 in the Project Approval, relating to bushfire management.

Specifically, condition 40 in the project approval requires the proponent (Multiquip Quarries) to:

- *Ensure that the project is suitably equipped to respond to any fires on site;*
- *Assist the Rural Fire Service and emergency services as much as possible if there is a fire on site.*

The statement of commitments contained within the project approval additionally requires:

- *14.1 Undertake refuelling within designated fuel bays or within cleared areas of the project site.*
- *14.2 Turn off vehicles during refuelling.*
- *14.3 Enforce the no-smoking policy in designated areas of the project site.*
- *14.4 Maintain fire extinguishers within site vehicles.*
- *14.5 Prepare a Bushfire Management Plan for the project.*
- *14.6 Regularly liaise with Goulburn Mulwaree Council personnel in relation to bushfire hazard.*

This bushfire management plan has been prepared with consultation with the NSW Rural Fire Service – Bungonia station.

## Bushfire Risk Assessment

The project site of the Ardmore Park Quarry is featured on the Goulburn Mulwaree Council's Bushfire Prone Vegetation Map. This map identifies parts of the Ardmore Park quarry as being both bushfire prone land (Vegetation Category 1) and identified buffer zones.

The Bushfire Danger Period runs from 1<sup>st</sup> October to 31<sup>st</sup> March. During these months prevailing winds are westerly and can frequently reach speeds of 65km/hr.

Bushfires have the potential to endanger lives of quarry staff and damage property, both on the quarry site itself and at neighbouring residences. Fires can potentially impact remnant pockets of native vegetation, which provide an important habitat for a wide variety of native species, in particular birds. Protected species identified at the Ardmore Park site include the Speckled Warbler and the Diamond Firetail.

## Potential Sources of Ignition

A number of potential sources of ignition have been identified in table 1.

Table 1.

Source of Ignition	Consequence	Ameliorative Action
Quarry area, offices, workshop and onsite residents	Fires could be started from faulty appliances, cooking, hot maintenance work, operation of plant or other vehicles, discarded cigarettes.	Vehicles restricted to identified paths which are Activities which create sparks or have a high risk of causing a fire are only undertaken in designated areas with fire extinguishing equipment available.
Electricity line	During windy weather transmission lines may come into contact with each other and arc, causing sparks which can start fires. Plant or machinery which comes into contact with transmission lines may also start fires.	Power lines within the quarry site and bypass road will be periodically inspected to ensure that they are free from any nearby vegetation. Operators will be advised as to the location of power lines and instructed to avoid unsafe work practices.
Lightning	Lightning may cause ignition on vegetation.	No practicable management practice.
External fires	Fires may spread from adjacent properties affected by fire.	Proportional fire fighting response as required.
Other	Other sources include arson, motor accidents in the local area, losing control of hazard reducing burning etc.	These events are by their nature unpredictable and will require proportional fire fighting response as required.

## Fire Risk Management Measures

The following general safeguards will be implemented:

- Maintenance of a 15,000L water cart in functioning condition.
- Portable radios will be used by all staff on foot and operating mobile and fixed plant.
- Fire extinguishers located at the site office, lunch room, workshop, in mobile plant, in work utility vehicles.
- Maintaining of spill kits in areas where spills may occur such as near the central fuel tank and within the fuel cart, to minimise the possibility that accelerants, particularly hydrocarbons, may spill or accumulate in the environment.
- Maintaining access tracks and fire trails in a manner which allows all weather access, particularly to the standpipe and sediment dams.

- Regular mowing of high grass, particularly in areas identified as buffer zones in the Goulburn Mulwaree Council Bushfire Prone Vegetation Map.
- Educating staff on bushfire awareness and evacuation procedures.

## Responsibilities

### Quarry Manager

The quarry manager will be responsible for:

- Ensure that the conditions of the development approval are met, including items raised in the statement of commitments.
- Ensure compliance with other regulations relating to bushfire management such as observing EPA “no burn days” or NSW Fire and Rescue “total fire ban”.
- Organise periodic reviews of the BFMP and fire fighting equipment on site to ensure a high level of preparedness.
- Overseeing the emergency procedure detailed in this plan.

### Environmental Officer

The environmental officer will be responsible for:

- Organise inspections of the site and assist the quarry manager in assessing bushfire risk.
- Report any bushfire related events, or other events which can cause material harm to the environment to any relevant regulatory agencies as appropriate, and in the Annual Environmental Review.
- Maintain the Ardmore Park weather station to ensure up to date fire danger index information is available.
- Update and review the BFMP as appropriate.

### Fire warden:

The fire warden is responsible for:

- Implementing the emergency procedure in the case of a bushfire.
- Co-ordinate the emergency response from the time of a declaration of a bushfire emergency to the time when emergency services arrive on site.
- Ensure that emergency procedures are prominently displayed on site.
- Ensure that fire fighting equipment such as extinguishers are available and maintained fit for purpose.
- Ensure that emergency services are contacted in the case of a bushfire emergency.
- Brief emergency service personnel on their arrival.

### Other employees:

All other Multiquip staff will be responsible for:

- Implement reasonable caution to prevent fires from starting or from spreading.
- Reporting all bushfire related incidents and near misses.
- Assist the RFS in firefighting responses where practicable.
- Follow reasonable instruction by management or emergency personnel in the event of a bushfire.

## Bushfire Emergency Procedure

This section describes the procedures for the evacuation of staff on site in the case of a bushfire. In the event of an emergency, the quarry manager will decide whether an evacuation will be ordered, or if not present, the fire warden. This decision will be made with respect to maximising the safety of staff and visitors on site as well as, if possible, protecting infrastructure and equipment.

### Site Information and Contacts

Contact Person	Stephen Wall		
Role	Quarry Manager		
Mobile	0418 255 535	Site Office Phone	4844 4339
Type of Facility	Active Quarry	Number of buildings	7
Number of employees	15	Number of residents	1
Number of contractors	Varies	Number of visitors	Varies

### Emergency Contact Details

Organisation	Office	Contact Number
Emergency Police, Fire, Ambulance	Call Centre	000
Goulburn Police	Goulburn	02 4824 0799
Marulan Police	Marulan	02 4841 1516
Goulburn Ambulance	Goulburn	02 4822 1822
Goulburn Fire and Rescue	Goulburn	02 4822 1608
Goulburn Base Hospital	Goulburn	02 4827 311
NSW Rural Fire Service	Bushfire Information Hotline	1800 679 737
Environmental Protection Authority	Environmental Information Hotline	131 555

## Emergency Assembly Point

Should an emergency situation be declared, all staff will assemble at the emergency muster point, located near the weighbridge. This area is signposted.

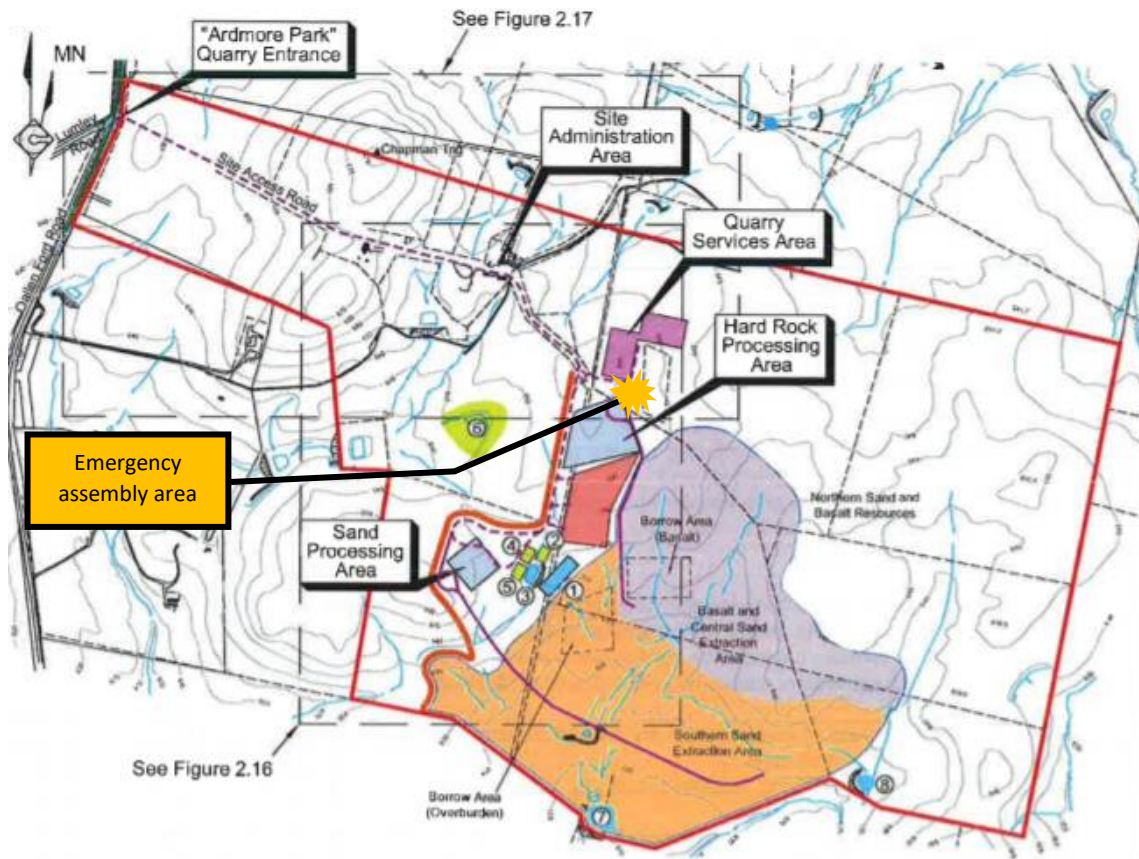
## Bushfire Emergency Triggers and Procedures

Trigger	Action
Fire danger index exceeds 50 i.e. is greater than "very high".	<ul style="list-style-type: none"> <li>• Quarry to continue operation.</li> <li>• Quarry manager, Environmental Officer and Fire Warden to regularly assess bushfire risk.</li> </ul>
EPA no burn notice or total fire ban in place or fire danger index exceeds 75 i.e. is greater than "severe".	<ul style="list-style-type: none"> <li>• Operations to continue.</li> <li>• Quarry manager, Environmental Officer and Fire Warden to regularly assess bushfire risk.</li> <li>• If total fire ban in place, no hot works to be approved unless authorised by quarry manager.</li> </ul>
Fires burning in local area	<ul style="list-style-type: none"> <li>• Operations to continue.</li> <li>• Quarry Manager and Fire Warden to regularly monitor conditions.</li> </ul>
Fire identified on quarry site	<ul style="list-style-type: none"> <li>• Emergency declared. All staff notified via radio.</li> <li>• Fire warden to assess risk. If fire can be safety contained using on site equipment then fire to be extinguished. <ul style="list-style-type: none"> <li>○ Incident to be reported to relevant authorities by the Environmental Officer.</li> </ul> </li> <li>• If fire cannot be safety contained, quarry manager to advise staff to deactivate plant and muster at the emergency assembly area. Emergency services to be contacted immediately.</li> <li>• If safe to do so, staff to be advised to evacuate, or remain on site and assist emergency services in appropriate fire fighting response. <ul style="list-style-type: none"> <li>○ If staff evacuated, work not to resume at quarry until emergency services declare an "all clear".</li> </ul> </li> </ul>

## Review and Reporting

The BFMP is to be reviewed annually, or following a declared emergency fire event. The Annual Review will comment on any fire on the quarry site during the reporting year.

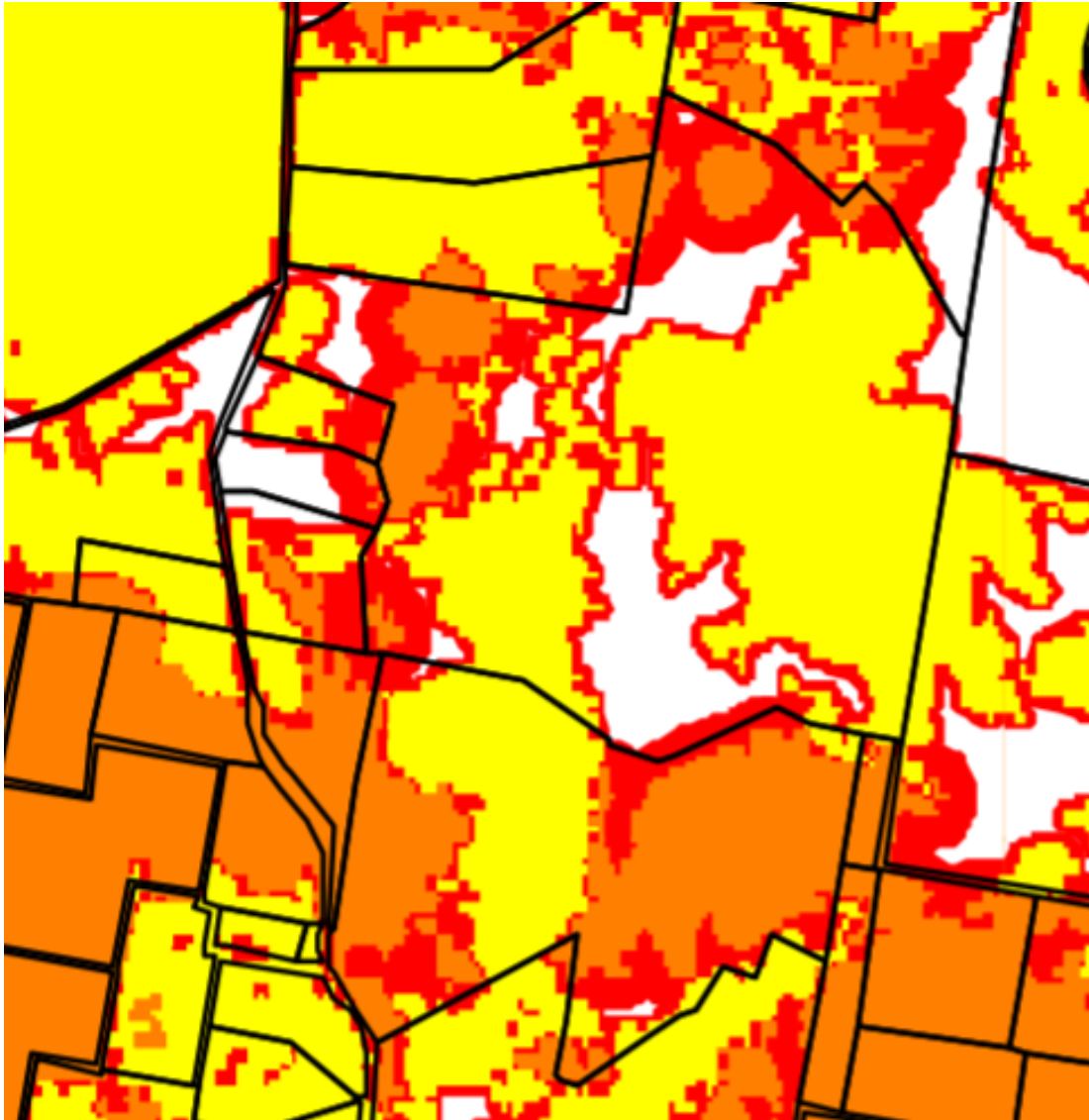
Site Map



- REFERENCE**
- Project Site Boundary
  - Sealed Road
  - Unsealed Road / Track
  - Fence
  - Contour (Interval= 5m)(m AHD)
  - Water Course / Drain
  - Vegetation
  - Basalt and Central Sand Extraction Area
  - Southern Sand Extraction Area
  - Product Stockpile Area
  - Processing Plant Area
  - Internal Haul Road
  - Site Access Road
  - Water Storage Dam (and No.)
  - Silt Storage Dam (and No.)
  - Acoustic Bund Wall



## Vegetation Map



Note: this map is an excerpt from the Goulburn Mulwaree Councils map of bushfire prone vegetation. Orange areas indicate vegetation with a high bushfire risk. Yellow areas indicate areas with lower bushfire risk while red areas represent buffer zones.