



**Ardmore Park Quarry**

# **Environmental Monitoring Report**

**October 2024**

## Site information

<b>Site Name</b>	<b>Ardmore Park Quarry</b>
Address	5152 Oallen Ford Road, Bungonia NSW, 2580
Project Approval	PA 07_0155 (Mod 3)
Environmental Licence	EPL 13213

## Licensee information

<b>Name</b>	<b>CEAL Limited (Multiquip Quarries)</b>
Registered Address	260 Tenth Avenue, Austral NSW, 2079
Post Address	PO Box 4, Austral, 2079
Australian Business Number	44 101 930 714
Email	<a href="mailto:enquiries@multiquip.com.au">enquiries@multiquip.com.au</a>
Phone	02 9606 0557

## Background

The Ardmore Park Quarry Project (the quarry) is a sand and basalt rock quarry located at 5152 Oallen Ford Road, near the village of Bungonia in the NSW Southern Tablelands. The quarry site is approximately 20 km south of the town of Marulan, and 200 km south-west of Sydney. The quarry is operated by CEAL Limited trading as Multiquip Quarries (Multiquip).

The quarry is currently approved to extract up to 400,000 tonnes of mixed quarry products per year, until June of 2039. Quarried materials are transported via road to Sydney, Canberra, the NSW South Coast and regional customers.

The quarry operates under Project Approval 07\_0155 (the approval) and Environment Protection Licence 13213 (the EPL). Copies of the current version of both documents can be accessed at Multiquip Quarries website <[www.mqquarry.com.au](http://www.mqquarry.com.au)>. Both the approval and the licence require the implementation of certain environmental monitoring programs, to ensure that the project remains compliant with established environmental impact criteria.

This document contains some of the key environmental monitoring results collected by the quarry on an ongoing basis. It does not describe the quarry's compliance criteria or the environmental performance of the project in the context of its ongoing approval-related obligations. Multiquip Quarries is required by Schedule 5(10) of the Project Approval to publish environmental monitoring results as they are obtained. This report has additionally been prepared in accordance with the EPL and with reference to the *Requirements for publishing pollution monitoring data* prepared by the NSW Environment Protection Authority (EPA, 2013).

A summary of the typical environmental monitoring undertaken by the quarry as well as the locations of sampling sites and indicative frequencies of sampling can be found within the Environmental Monitoring Program, available on the Multiquip Quarries website.

A more detailed presentation and discussion of monitoring results in context with the performance criteria and predicted impacts of the quarry is provided in the Annual Review. The Annual Review is prepared in March of each year to describe the activities and environmental performance of the project for the preceding calendar year. All previous Annual Reviews can be found on the Multiquip Quarries website.

An Annual Return, detailing the results of each year's environmental monitoring is lodged to the NSW EPA directly at the conclusion of each reporting year. The Annual Return contains details of any incidents or non-compliances with the quarry's EPL. Copies of each year's Annual Return, in addition to a copy of the current and previous versions of the EPL can be found at the NSW EPA's website <<https://www.epa.nsw.gov.au/>>.

Readers should note that monitoring requirements may vary throughout the life of the quarry as a consequence of updates to the approval, EPL and site management plans. Changes to the in-force monitoring regime are discussed in each Annual Review.

A list of the environmental parameters currently required to be measured on an ongoing basis by the quarry is presented in Table 1 below.

*Table 1 - Environmental monitoring requirements*

Parameter	Sample Type	Assessed By
Deposited Dust	Bottled sample	NATA approved laboratory
Particulate Matter (PM)	Continuous PM2.5 and PM10 monitoring station	Autonomous PM monitoring station located on quarry site
Standing Water Level (SWL)	Measure of water level depth within monitoring bores	Physical measurement – water level meter
Water quality	Bottled samples, collected from monitoring bores and springs	NATA approved laboratory
Spring flow rate	Measure of flow rate of selected spring features on multiple adjoining properties	Autonomous logger and visual/physical assessment
Noise	Attended noise survey	Third party consultant
Meteorological/Weather monitoring	Diverse weather specific parameters including temperature, humidity, wind speed/direction etc.	Autonomous weather monitoring station located on quarry site
Community complaints	Register of community complaints	Register kept on site, maintained by Multiquip staff

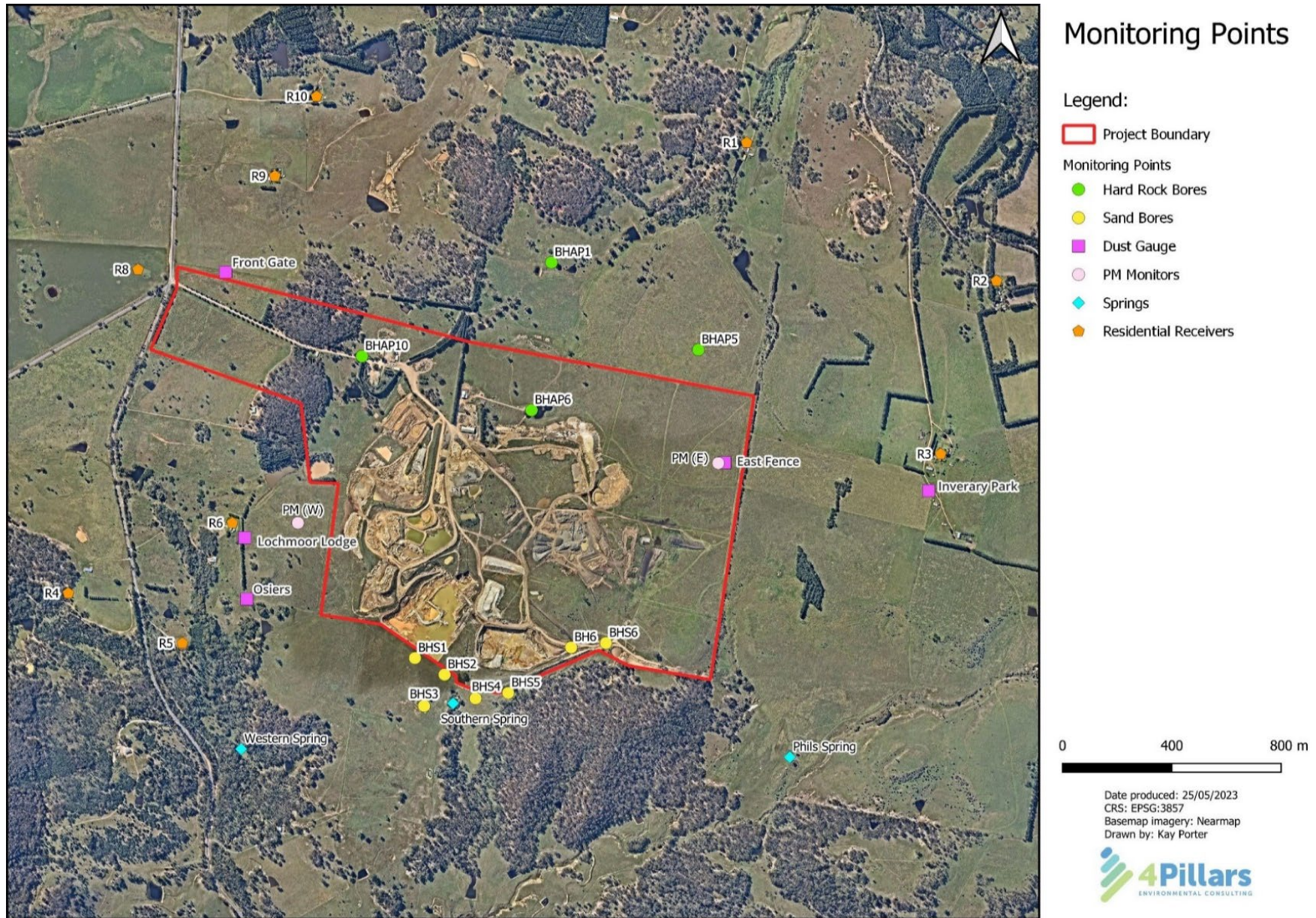


Figure 1: Ardmore Park monitoring locations (relevant to the data represented in this report).

## Standing Water Level (SWL)      Sand Bores

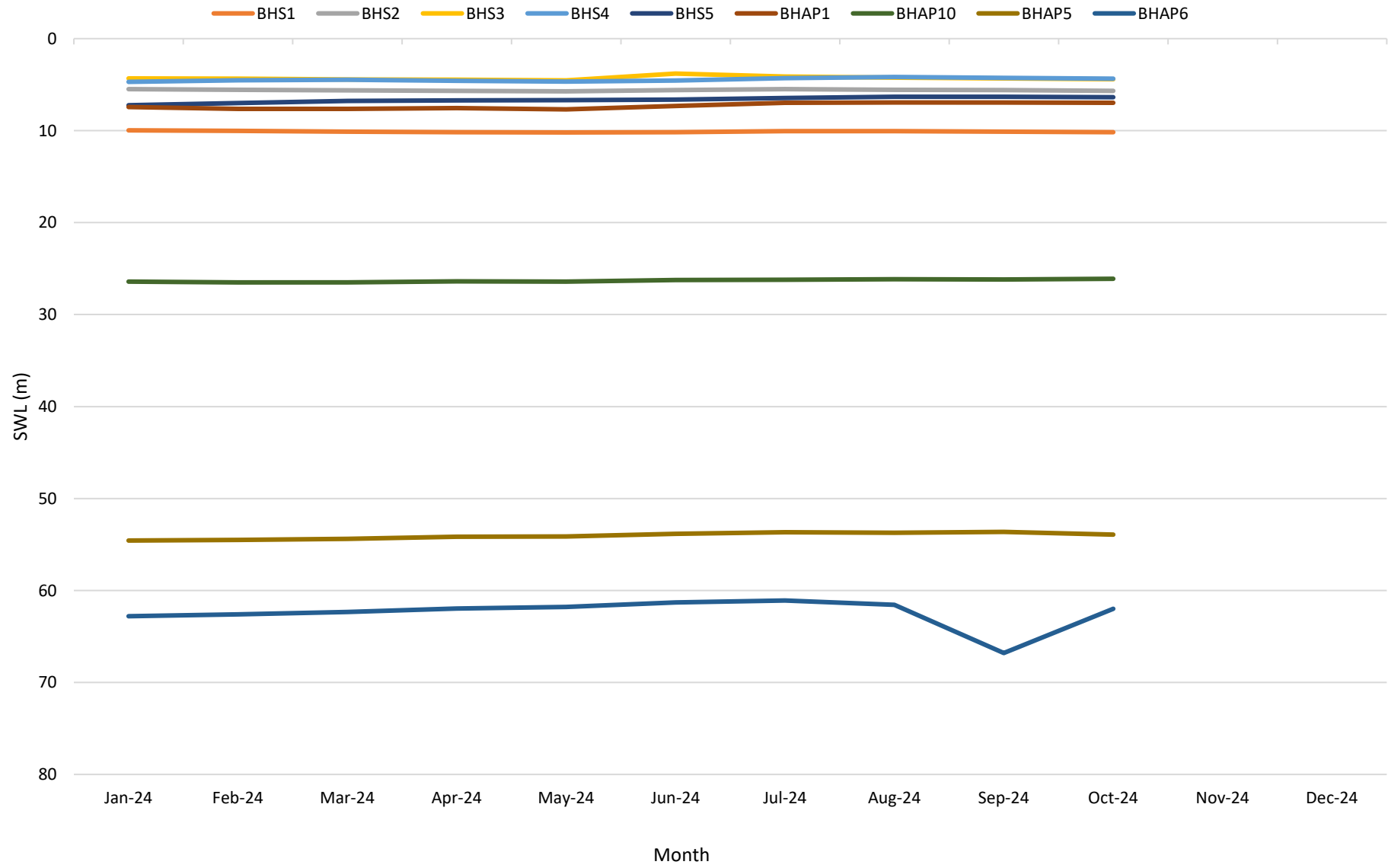
Month	BH6	BHS1	BHS2	BHS3	BHS4	BHS5	BHS6
Jan-24	14.57	9.97	5.49	4.32	4.7	7.24	
Feb-24	14.6	10.03	5.55	4.35	4.54	7	
Mar-24	14.53	10.11	5.62	4.44	4.46	6.77	
Apr-24		10.17	5.67	4.48	4.57	6.73	
May-24	14.46	10.2	5.73	4.54	4.66	6.7	
Jun-24	14.52	10.16	5.58	3.8	4.56	6.62	
Jul-24	14.47	10.06	5.49	4.13	4.29	6.45	
Aug-24	14.48	10.07	5.55	4.25	4.17	6.32	
Sep-24	14.42	10.12	5.60	4.33	4.28	6.32	
Oct-24	14.38	10.17	5.67	4.41	4.36	6.37	
Nov-24							
Dec-24							

*Yellow cells indicate unavailable data. BHS6 not currently accessible. BH6 inaccessible in April.*

## Standing Water Level (SWL)      Hard Rock Bores

Month	BHAP1	BHAP10	BHAP5	BHAP6
Jan-24	7.45	26.43	54.57	62.80
Feb-24	7.63	26.49	54.50	62.60
Mar-24	7.64	26.50	54.40	62.35
Apr-24	7.56	26.38	54.17	61.97
May-24	7.69	26.42	54.13	61.80
Jun-24	7.31	26.25	53.84	61.30
Jul-24	6.97	26.22	53.67	61.09
Aug-24	6.94	26.16	53.72	61.55
Sep-24	6.96	26.19	53.63	66.80
Oct-24	6.98	26.11	53.93	61.98
Nov-24				
Dec-24				

### SWL (m) TOC

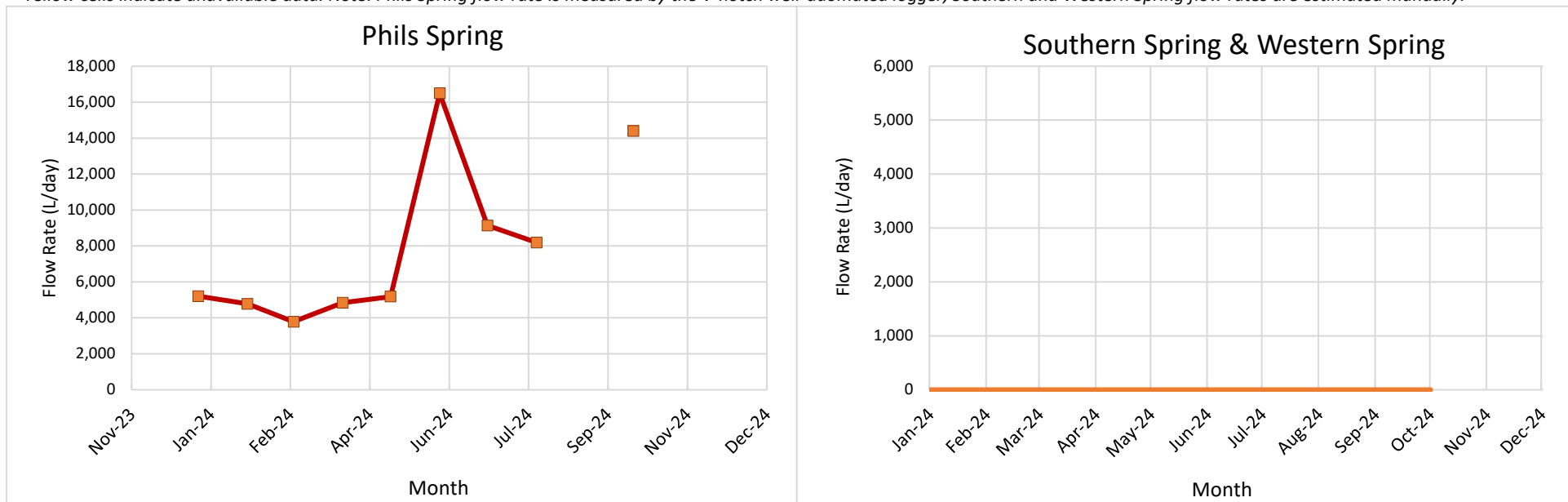




## Spring Flow Rate (L/day)

Month	Reporting Year	Phils Spring (V-notch weir)	Southern Spring	Western Spring	Notes
Jan-24	2023-24	5206.30	0.00	0.00	
Feb-24	2023-24	4784.77	0.00	0.00	
Mar-24	2023-24	3787.66	0.00	0.00	
Apr-24	2023-24	4838.40	0.00	0.00	
May-24	2023-24	5184.00	0.00	0.00	
Jun-24	2023-24	16493.76	0.00	0.00	
Jul-24	2023-24	9141.68	0.00	0.00	
Aug-24	2023-24	8190.15	0.00	0.00	
Sep-24	2024-25		0.00	0.00	Phils Spring V-notch weir data unavailable for September.
Oct-24	2024-25	14400.00	0.00	0.00	Manual estimate taken for Phils Spring in October.
Nov-24	2024-25				
Dec-24	2024-25				

Yellow cells indicate unavailable data. Note: Phils Spring flow rate is measured by the V-notch weir automated logger, Southern and Western Spring flow rates are estimated manually.



## Deposited Dust

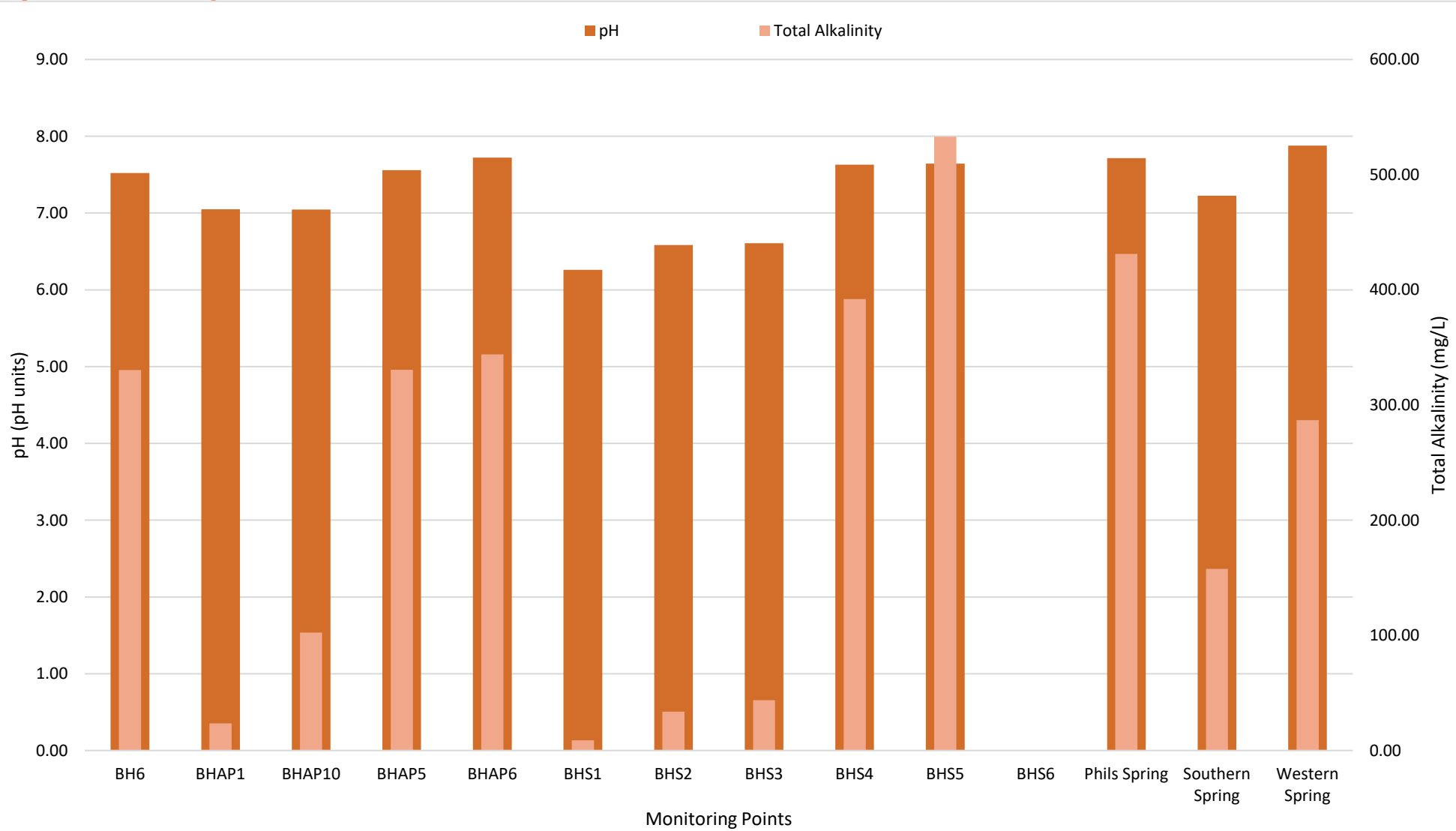
Month	EPL#	Name	Ash Content (g/m <sup>2</sup> /month)	Combustible Matter (g/m <sup>2</sup> /month)	Total Soluble Matter (g/m <sup>2</sup> /month)	Total Insoluble Matter (g/m <sup>2</sup> /month)	Total Solids (g/m <sup>2</sup> /month)
Jan-24	1	Inverary Park	0.7	<0.1	1.4	0.7	2.1
Jan-24	2	The Osiers	0.1	<0.1	1.2	0.1	1.3
Jan-24	3	Lochmoor Lodge	0.2	0.4	1.2	0.6	1.8
Jan-24	4	Front Entrance	0.2	0.1	0.8	0.3	1.1
Jan-24		East Fence	1.4	1.9	16.6	3.3	19.9
Feb-24	1	Inverary Park	1.5	0.5	0.4	2	2.4
Feb-24	2	The Olsiers	0.4	0.4	1.4	0.8	2.2
Feb-24	3	Lochmore Lodge	0.8	0.7	1.3	1.5	2.8
Feb-24	4	Front Entrance	0.5	0.2	0.7	0.7	1.4
Feb-24		East Fence	<0.1	0.2	2.6	0.2	2.8
Mar-24	1	Inverary Park	0.2	0.9	3.8	1.1	4.9
Mar-24	2	The Osiers	0.1	<0.1	0.3	0.1	0.4
Mar-24	3	Lochmoor Lodge	0.3	<0.1	1.6	0.3	1.9
Mar-24	4	Front Entrance	0.2	<0.1	2.2	0.2	2.4
Mar-24		East Fence	0.2	<0.1	0.2	0.2	0.4
Apr-24	1	Inverary Park	2.3	0.3	0.5	2.6	3.1
Apr-24	2	The Osiers	0.1	<0.1	<0.1	0.1	0.1
Apr-24	3	Lochmoor Lodge	0.2	0.2	0.4	0.4	0.8
Apr-24	4	Front Entrance	0.3	0.1	<0.1	0.4	0.4
Apr-24		East Fence	0.7	1.6	5.1	2.3	7.4
May-24	1	Inverary Park	3.3	1.5	5.8	4.8	10.6
May-24	2	The Osiers	0.1	<0.1	2.7	0.1	2.8
May-24	3	Lochmoor Lodge	0.4	0.7	4.5	1.1	5.6
May-24	4	Front Entrance	0.2	0.2	2.4	0.4	2.8
May-24		East Fence	0.9	0.5	6.2	1.4	7.6
Jun-24	1	Inverary Park	0.7	0.5	1.2	1.2	2.4
Jun-24	2	The Osiers	0.1	0.1	0.5	0.2	0.7
Jun-24	3	Lochmoor Lodge	<0.1	0.3	0.6	0.3	0.9

## Deposited Dust

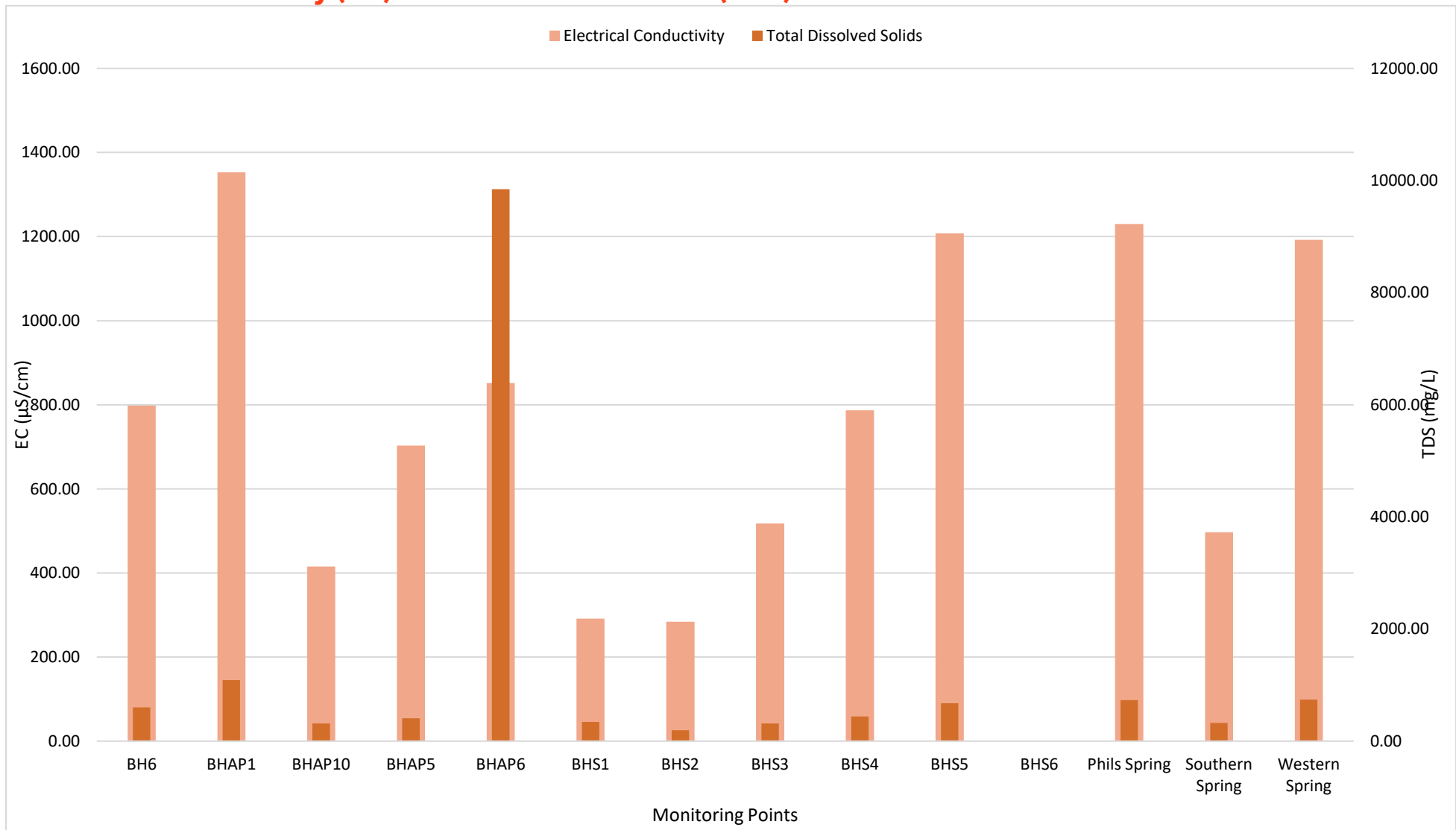
Month	EPL#	Name	Ash Content (g/m <sup>2</sup> /month)	Combustible Matter (g/m <sup>2</sup> /month)	Total Soluble Matter (g/m <sup>2</sup> /month)	Total Insoluble Matter (g/m <sup>2</sup> /month)	Total Solids (g/m <sup>2</sup> /month)
Jun-24	4	Front Entrance	0.3	<0.1	<0.1	0.3	0.3
Jun-24		East Fence	1.5	5.2	7.7	6.7	14.4
Jul-24	1	Inverary Park	0.5	0.6	1.9	1.1	3
Jul-24	2	The Osiers	0.4	0.6	1.1	1	2.1
Jul-24	3	Lochmoor Lodge	0.2	0.2	2.4	0.4	2.8
Jul-24	4	Front Entrance	0.3	<0.1	1.6	0.3	1.9
Jul-24		East Fence	0.4	0.2	2.3	0.6	2.9
Aug-24	1	Inverary Park	<0.1	0.3	2.7	0.3	3
Aug-24	2	The Osiers	0.5	1.1	<0.1	1.6	1.6
Aug-24	3	Lochmoor Lodge	0.1	0.3	<0.1	0.4	0.4
Aug-24	4	Front Entrance	<0.1	0.4	2.9	0.4	3.3
Aug-24		East Fence	3.2	2.3	1.1	5.5	6.6
Sep-24	1	Inverary Park	0.3	0.3	2.3	0.6	2.9
Sep-24	2	The Osiers	0.1	0.1	0.3	0.2	0.5
Sep-24	3	Lochmoor Lodge	0.2	0.1	<0.1	0.3	0.3
Sep-24	4	Front Entrance	7.3	8.6	13.6	15.9	29.5
Sep-24		East Fence	4.9	0.7	0.2	5.6	5.8

# Water Analysis (Jan - Apr)

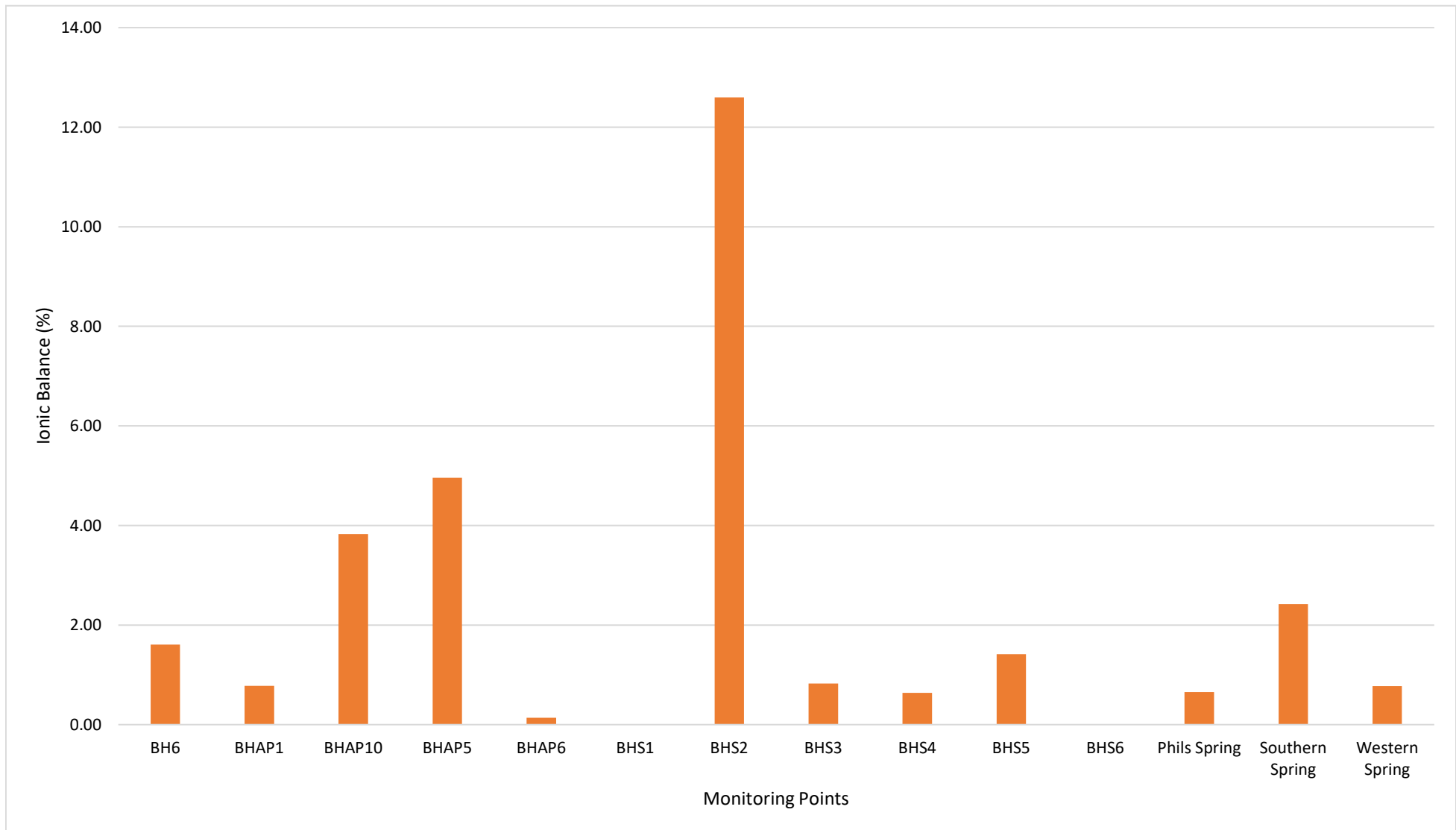
## pH & Alkalinity



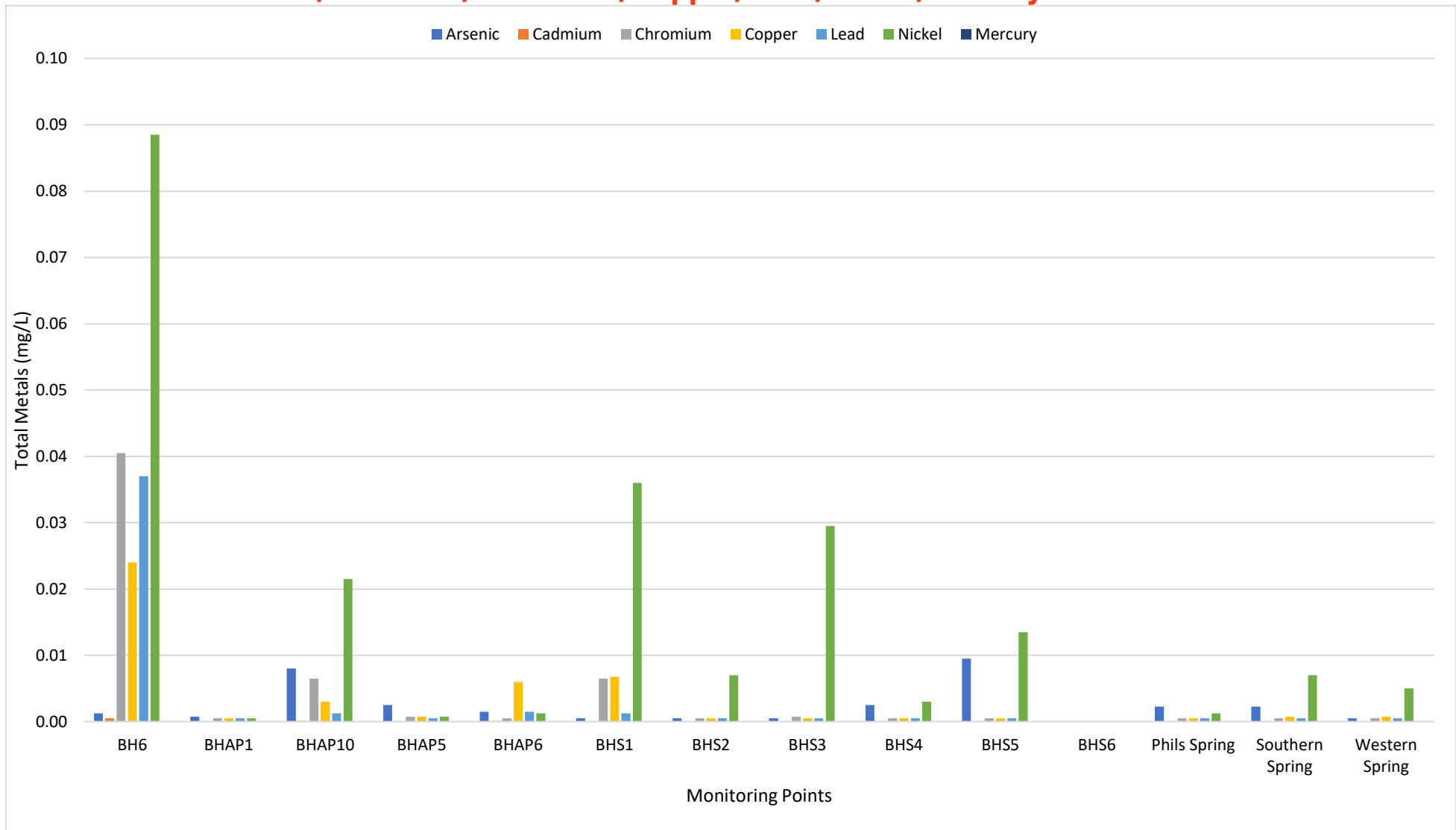
## Electrical Conductivity (EC) & Total Dissolved Solids (TDS)



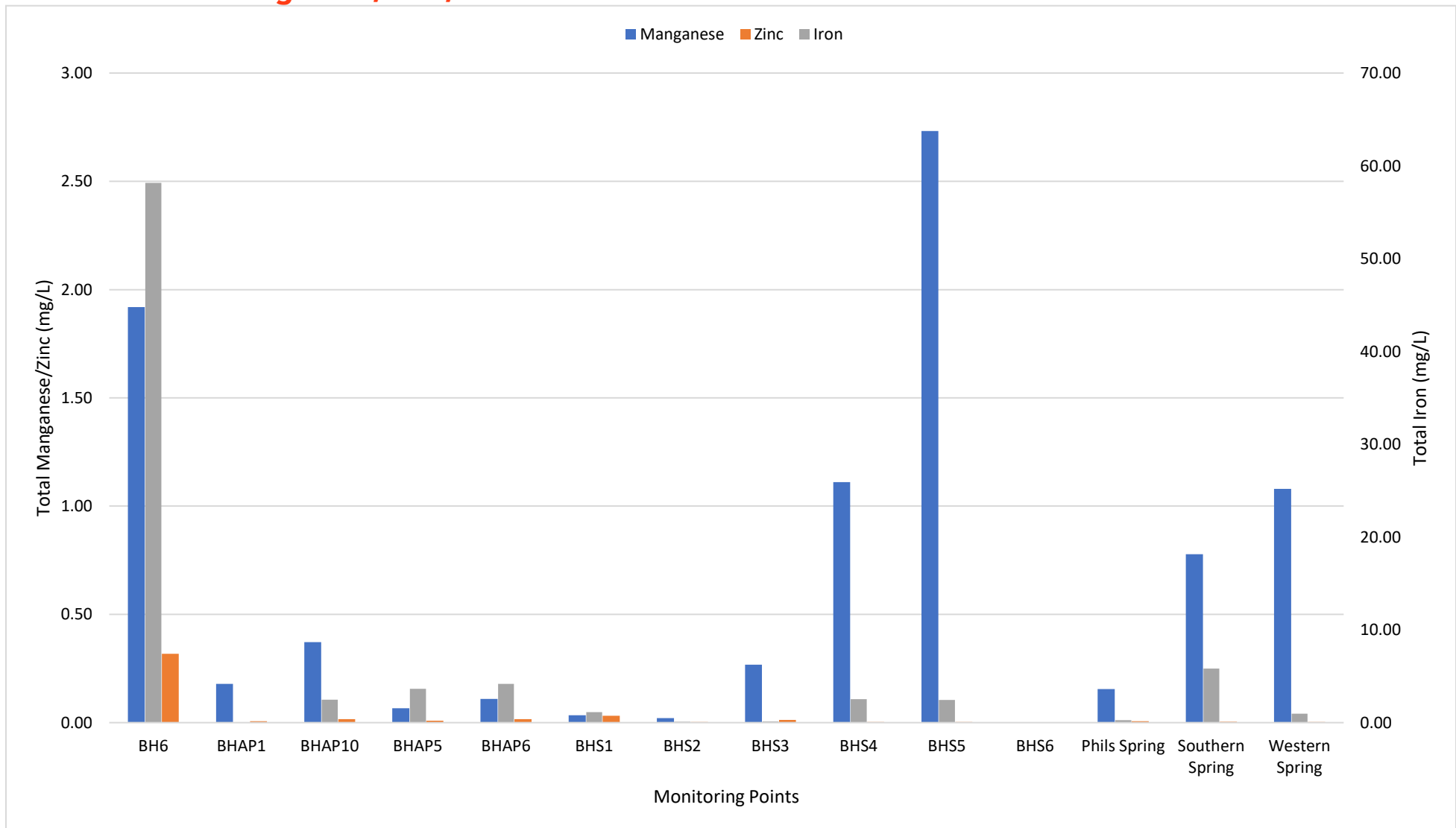
## Ionic Balance



## Total Metals - Arsenic, Cadmium, Chromium, Copper, Lead, Nickel, Mercury

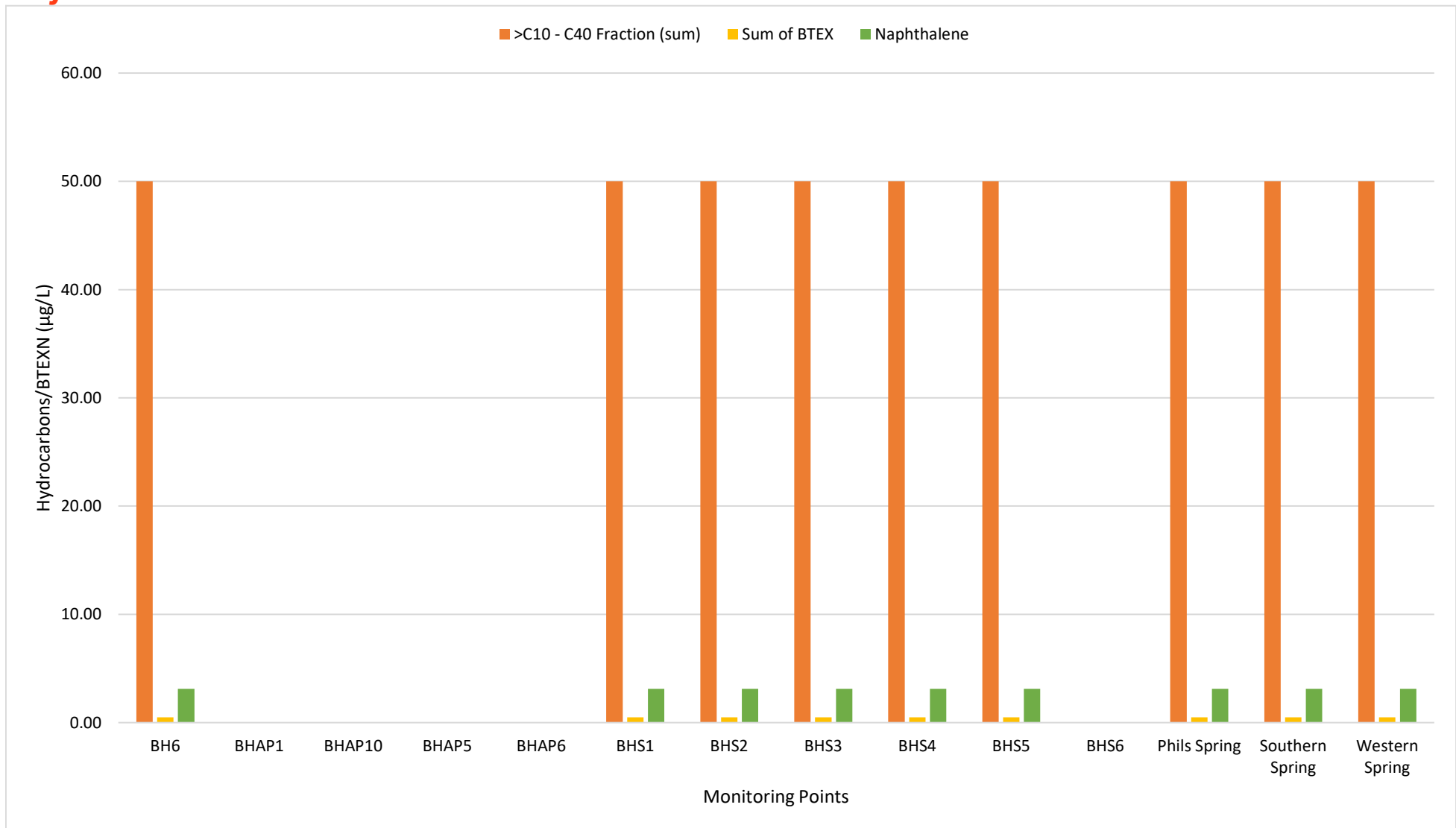


## Total Metals - Manganese, Zinc, Iron





## Hydrocarbons & BTEXN\*

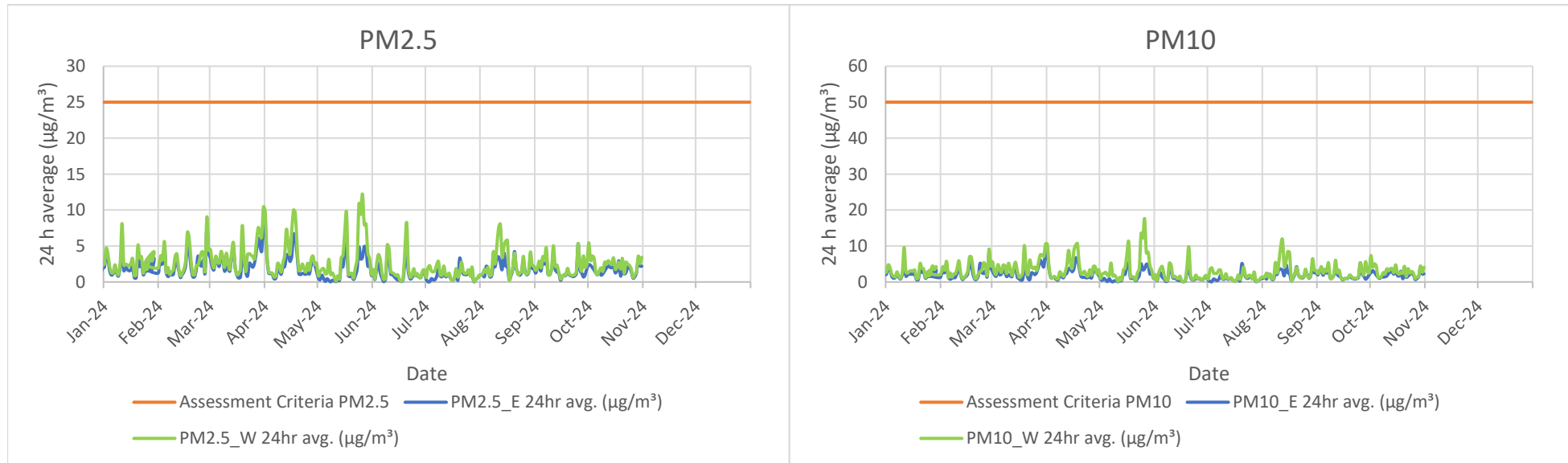


\* All results below LOR censored as LOR/2.

## Particulate Matter (PM) - 24hr Average

Month	PM2.5_W 24hr avg. ( $\mu\text{g}/\text{m}^3$ )	PM10_W 24hr avg. ( $\mu\text{g}/\text{m}^3$ )	PM2.5_E 24hr avg. ( $\mu\text{g}/\text{m}^3$ )	PM10_E 24hr avg. ( $\mu\text{g}/\text{m}^3$ )	Limit: PM10 ( $\mu\text{g}/\text{m}^3$ )	Limit: PM2.5 ( $\mu\text{g}/\text{m}^3$ )
Jan-24	2.69	2.93	1.98	2.10	50/24hr	25/24hr
Feb-24	3.03	3.39	2.37	2.55	50/24hr	25/24hr
Mar-24	3.86	4.42	2.84	2.70	50/24hr	25/24hr
Apr-24	3.50	3.92	2.38	2.49	50/24hr	25/24hr
May-24	3.41	4.20	1.63	1.75	50/24hr	25/24hr
Jun-24	1.86	2.04	1.21	1.24	50/24hr	25/24hr
Jul-24	1.29	1.67	0.86	1.01	50/24hr	25/24hr
Aug-24	2.76	3.50	1.89	2.15	50/24hr	25/24hr
Sep-24	2.10	2.36	1.40	1.49	50/24hr	25/24hr
Oct-24	1.74	2.08	1.27	1.44	50/24hr	25/24hr
Nov-24					50/24hr	25/24hr
Dec-24					50/24hr	25/24hr
<b>Annual Average</b>	<b>2.62</b>	<b>3.05</b>	<b>1.78</b>	<b>1.89</b>	<b>25/yr</b>	<b>8/yr</b>

Yellow cells indicate unavailable data.



## Noise

Month	Time	Location	EPL Point	Laeq at measurement point	Estimated Laeq at assessment point	Category	Compliant?
Mar-24	6:30:00 AM	5025 Oallen Ford Rd	4	61	≤40	Quarry	Yes
Mar-24	7:00:00 AM	5028 Oallen Ford Rd	5	60	<30	Quarry	Yes
Mar-24	8:00:00 AM	5046 Oallen Ford Rd	6	48	<30	Quarry	Yes
Mar-24	8:30:00 AM	5194 Oallen Ford Rd	9	46	<30	Quarry	Yes
Mar-24	10:00:00 AM	40 Broadhead Ln	3	45	<30	Quarry	Yes
Mar-24	10:30:00 AM	28 King St	-	60	<25	Road	Yes
Mar-24	10:45:00 AM	28 King St	-	59	<25	Road	Yes
Mar-24	11:15:00 AM	328 Jerrara Rd	-	65	46	Road	Yes
Mar-24	11:30:00 AM	328 Jerrara Rd	-	66	-	Road	Yes
Mar-24	11:15:00 AM	989 Jerrara Rd	-	65	46	Road	Yes
Mar-24	11:30:00 AM	989 Jerrara Rd	-	66	-	Road	Yes
Mar-24	11:45:00 AM	989 Jerrara Rd	-	65	47	Road	Yes