



Ardmore Park Quarry

CCC Meeting 2:30 pm Friday 15th September 2023

Introduction

- Summary of operations
- Management Plans and Annual Review
- NRAR Notice
- Noise monitoring
- Environmental monitoring
- Discharge trial
- Road (haul route)
- Parsonage
- Larbert Tree
- Complaints and feedback



Operations

- Average approx. 40 truck loads per day.
- YTD sales FY 22-23 approx. 90% compared to last year.
- Proportion of rock sales increasing – will continue as new rock customers come on board.
- Back-filling of the void continues.
 - Filled areas currently used for stockpile storage
 - Once area is sufficient, rehabilitation can commence (expected within 18 months, market dependent)



Management Plans

- No update: still awaiting response from DPE.

Annual Review

- The 2022 Annual Review was approved by DPE on 2 May 2023 and is available on the Multiquip website.

NRAR Notice

- NRAR Direction complied with, communication sent on 7 March 2023.
- No further action.

Noise Monitoring

- Undertaken by Pulse White Noise Acoustics in August 2023.
- Assessment of quarry operational noise upon four residences at five locations.
- Assessment of traffic noise upon four residences at four locations.
- No non-compliances identified.
- Results have been made available on the website as normal.



Monitoring



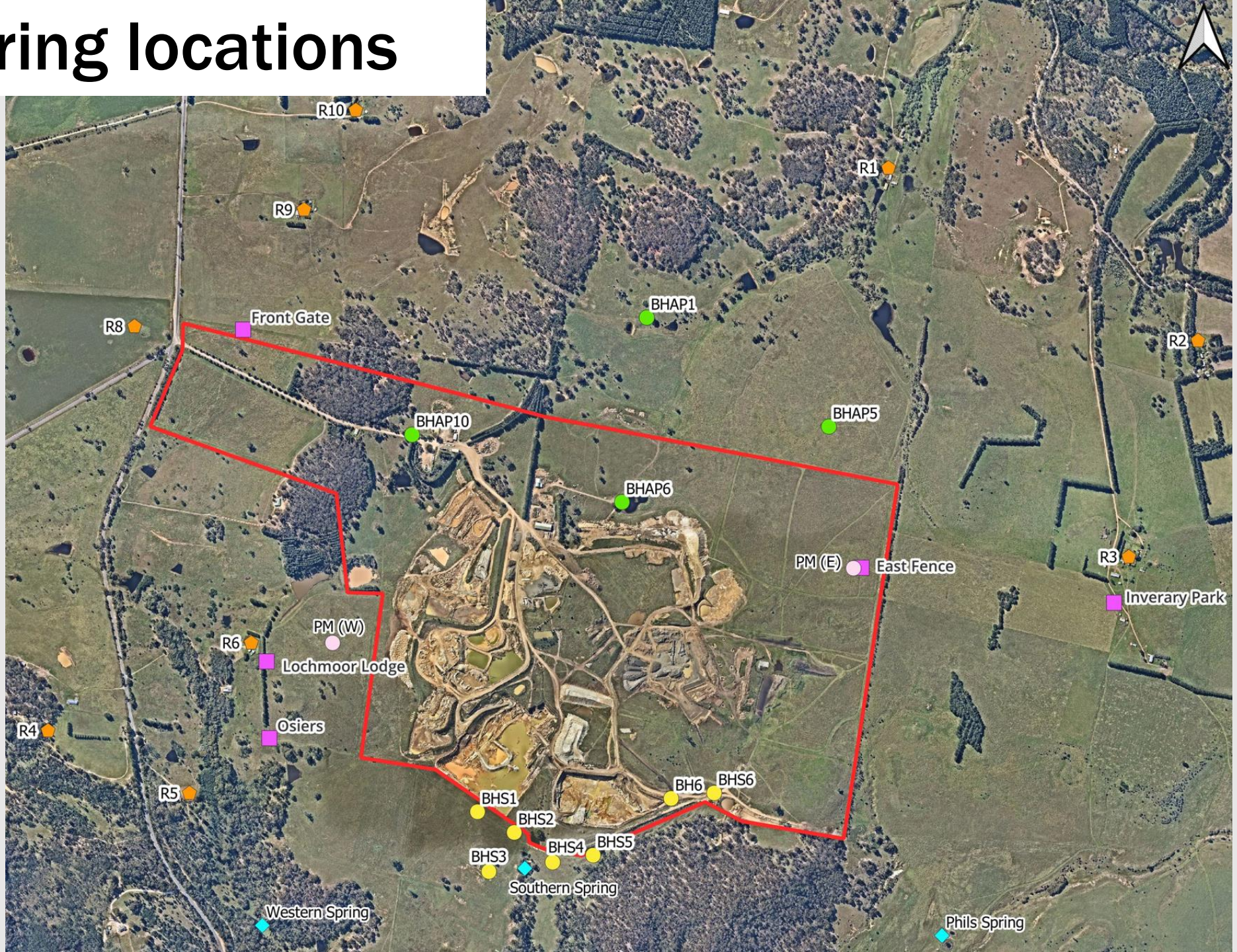
- Continues to be undertaken monthly in accordance with EPL
- All monitoring results are now uploaded monthly in a combined Environmental Monitoring Report (rather than formerly split between EPL and Project Approval). Up-to-date for August.
- Water sampling most recently conducted in July.
- Additional water sampling associated with the discharge trial undertaken as required.

Site monitoring results

- Groundwater standing water levels (SWL) have generally remained stable
- Some recent SWL decreases identified in sand bores close to Old Pit – potentially related to discharge, long-term data to be reviewed.
- Elevated dust readings from January and March could not be directly attributed to quarry or discounted, notified to DPE.
- Particulate matter results well below relevant limits.

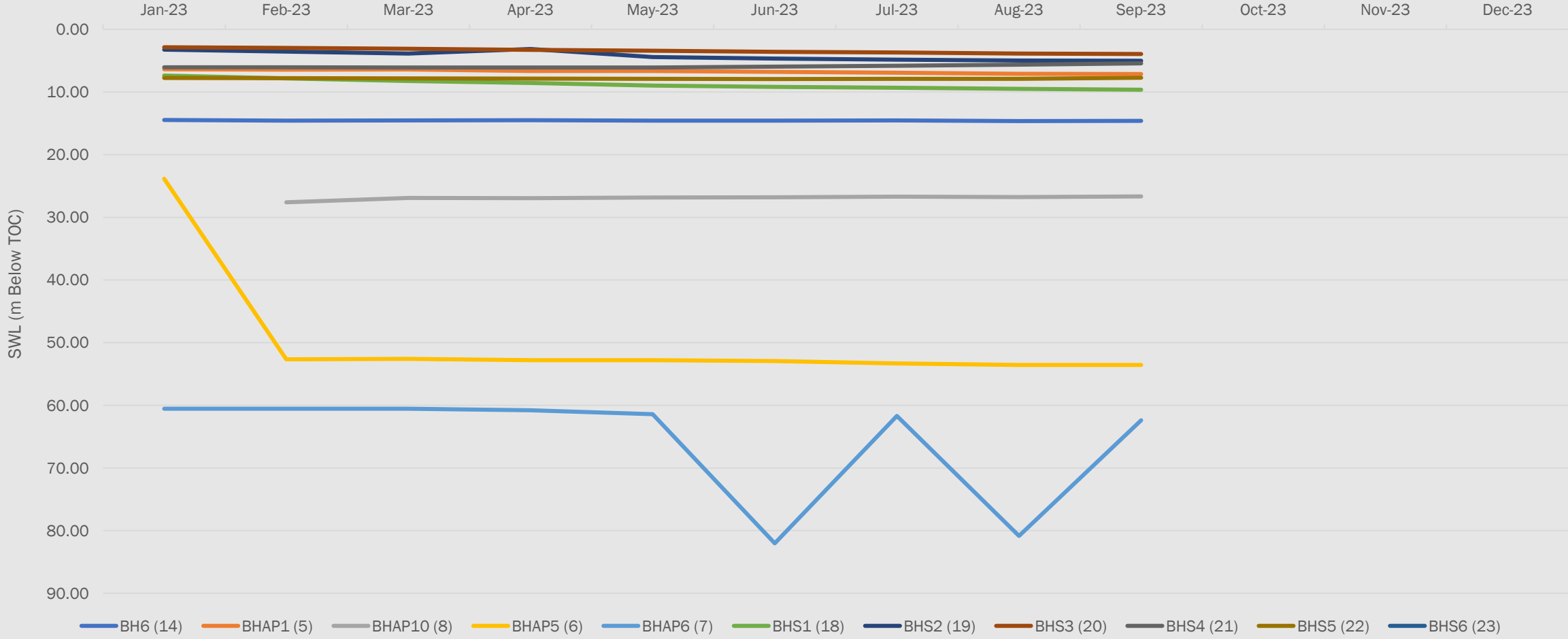


Monitoring locations



Monitoring bores - standing water level (depth)

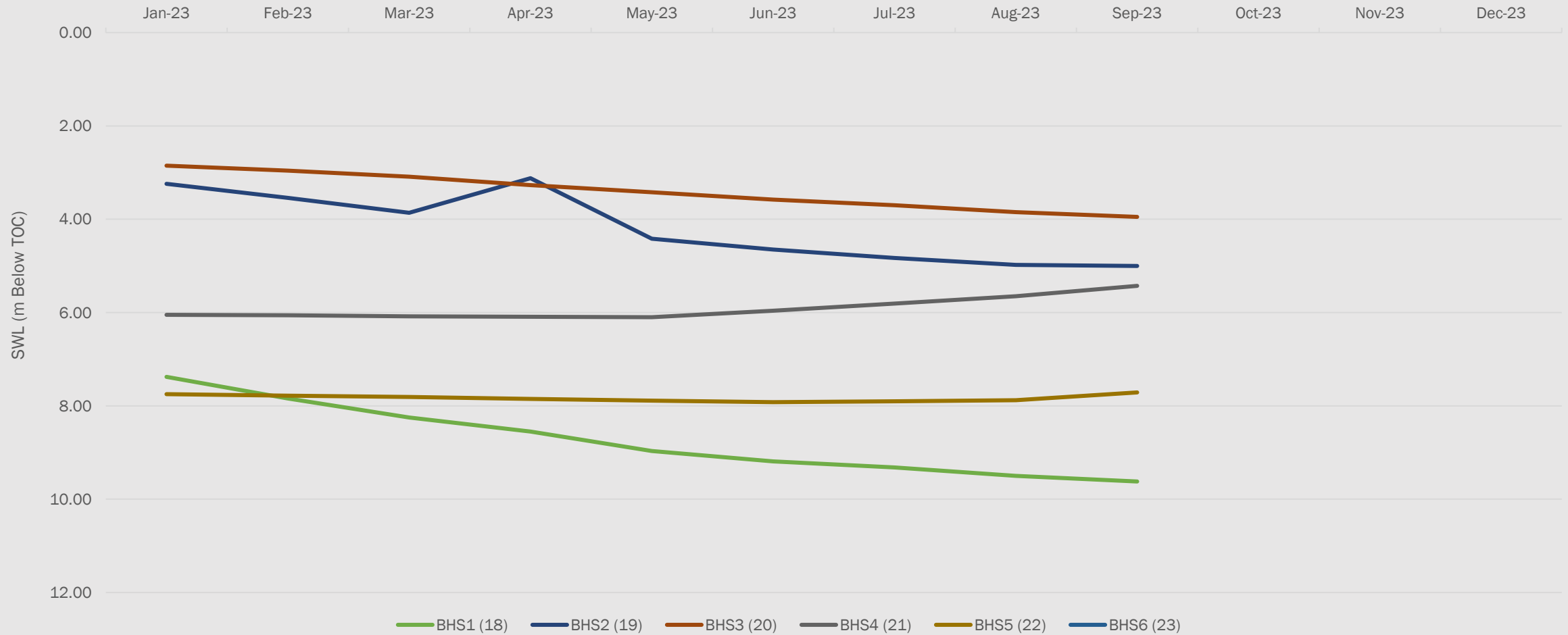
Standing water level



- Missing data for BHAP10 due to false reading recorded in January
- Lowering of BHAP5 SWL due to relining of bore in January
- Low BHAP6 readings impacted by use of pump during measurement

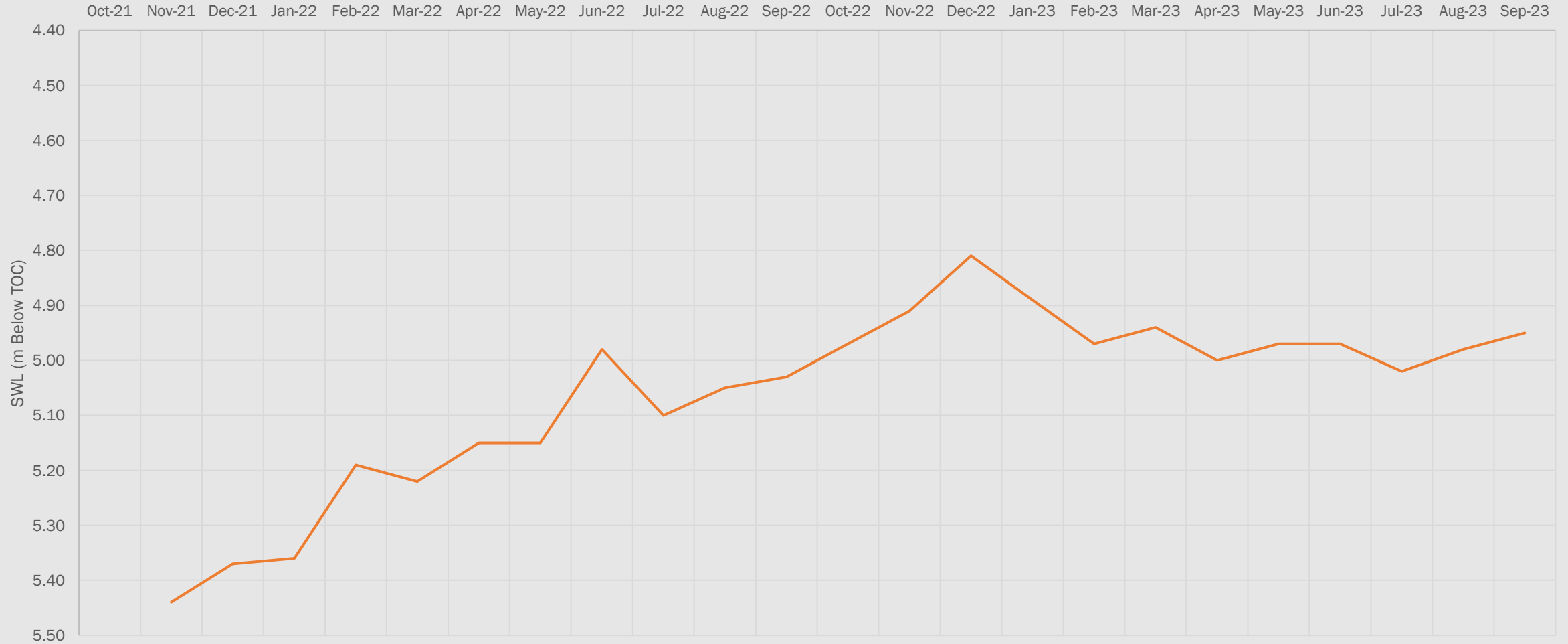
Sand monitoring bores - standing water level

Standing water level



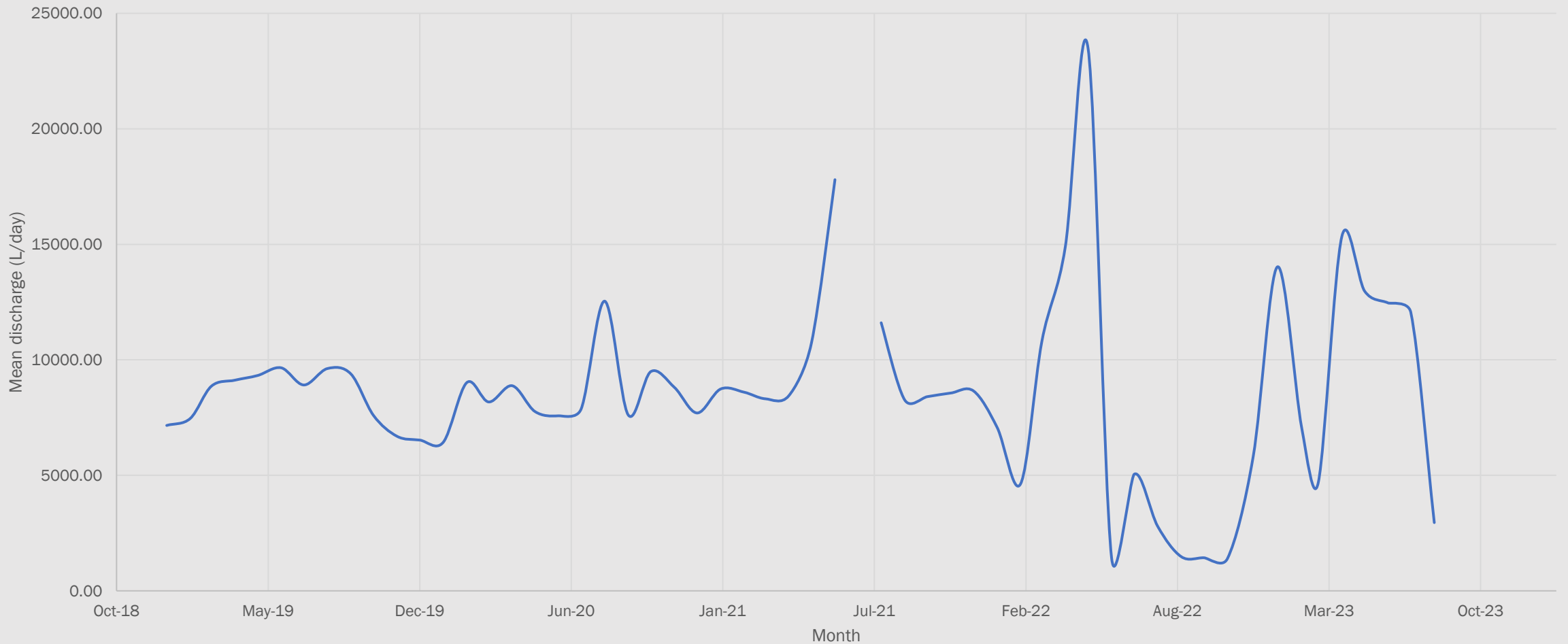
Standing Water Level - Damar Lodge

Standing Water Level - Damar Lodge



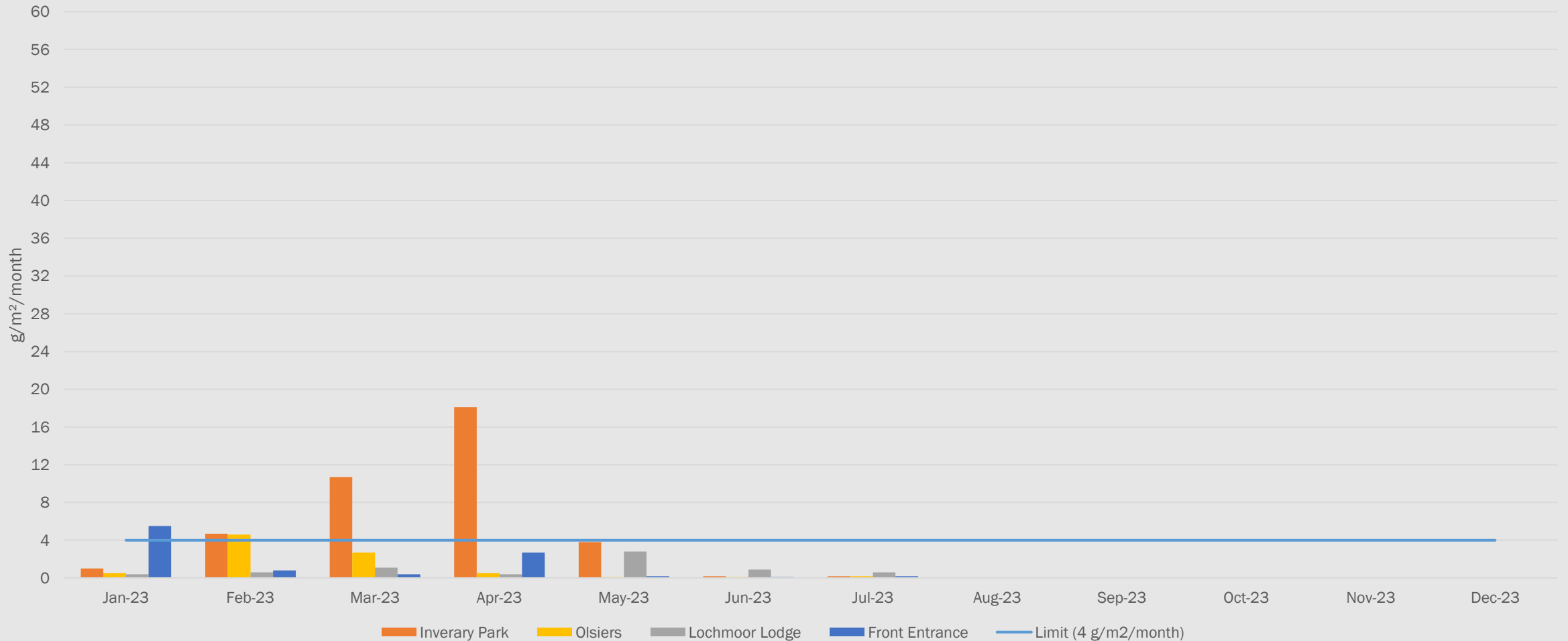
Spring Flow - Inverary Park

Phils Spring 2019 - Present



Deposited dust (insoluble solids)

Insoluble Solids - 2023



Discharge trial



- EPL varied to allow a discharge trial, completed in August 2023
- Water accumulated in Old Pit successfully discharged
- Thorough assessment:
 - Characterisation of water quality prior to discharge
 - Daily validation analysis of water during discharge
 - Photo point monitoring for physical impacts
 - Ambient water quality monitoring for chemical impacts
 - Regular reporting to EPA
- No negative impacts observed during the trial
- Will apply for permanent discharge from EPA

Parsonage

- Grates installed for protection but to allow ventilation (Oct '22)
- Surroundings regularly mowed



Road (haul route)

- Council road works completed, except for black spot works.
 - Jerrara Road back to an 80 zone.
- No further works proposed.



Larbert Tree

- New sign installed



Complaints and feedback

- Once complaint received since the March 2023 meeting.
 - 23 March 2023: Noise levels at residence

