



# Ardmore Park Quarry

**CCC Meeting 2:30 pm Friday 3<sup>rd</sup> May 2024**

# Introduction

- Summary of operations
- Management Plans and Annual Review
- Noise monitoring
- Environmental monitoring
- Discharge trial
- Dust Assessment
- Complaints and feedback



# Operations

- Average approx. 20 truck loads per day.
- YTD sales FY 23-24 approx. 90% compared to last year.
- Proportion of rock sales increasing – will continue as new rock customers come on board.
- Back-filling of the void continues.
  - Filled areas currently used for stockpile storage
  - Once area is sufficient, rehabilitation can commence (expected within 18 months, market dependent)



# Management Plans

- DPE requested that the four submitted plans were withdrawn considering the amount of time that has passed since submission.
- Review of these plans performed, confirmed that they are still appropriate and reflect operations, as such - no intent to withdraw at this stage.

# Annual Review

- The 2023 Annual Review was submitted to DPE on 26 March 2024, compliant with due date.
- Will be published on the Multiquip website once approved (anticipate end of this month).

# Noise Monitoring

- Undertaken by Pulse White Noise Acoustics in March 2024.
- Assessment of quarry operational noise upon four residences at five locations.
- Assessment of traffic noise upon four residences at four locations.
- Draft report received; results will be made available on the website as normal pending receipt of final report.
- No non-compliances identified.
- Next noise monitoring session to be conducted in late-2024.



# Monitoring



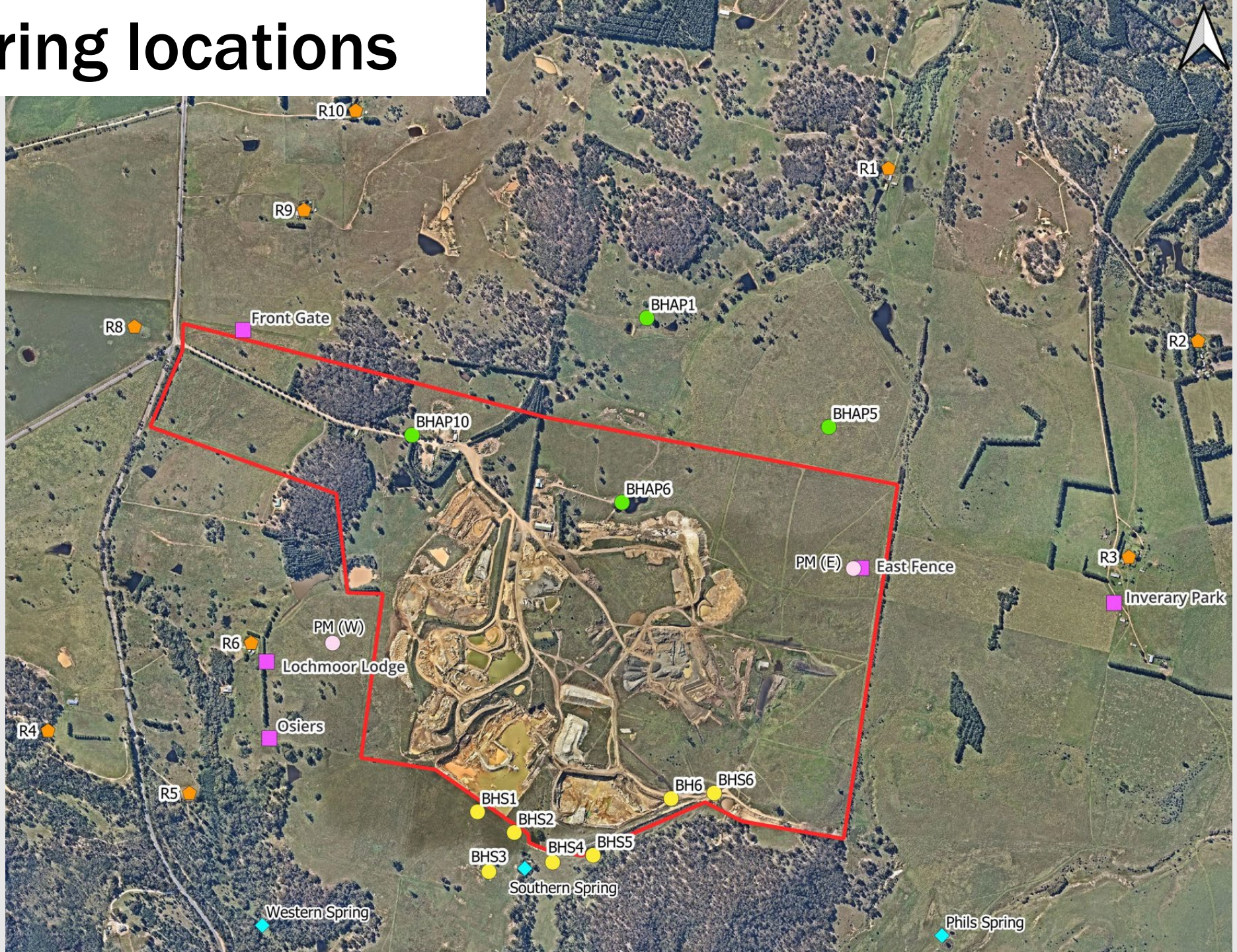
- Continues to be undertaken monthly in accordance with EPL
- Monitoring results uploaded monthly in combined Environmental Monitoring Report
  - Delays with laboratory data have delayed recent reports.
- Water sampling most recently conducted in January.
- Additional water sampling associated with the discharge trial undertaken as required.

# Site monitoring results

- Groundwater standing water levels (SWL) have generally remained stable
- Some recent SWL decreases identified in sand bores close to Old Pit – potentially related to discharge, long-term data to be reviewed.
- Dust Management Capacity Assessment submitted (discussed later).
- Particulate matter results well below relevant limits.



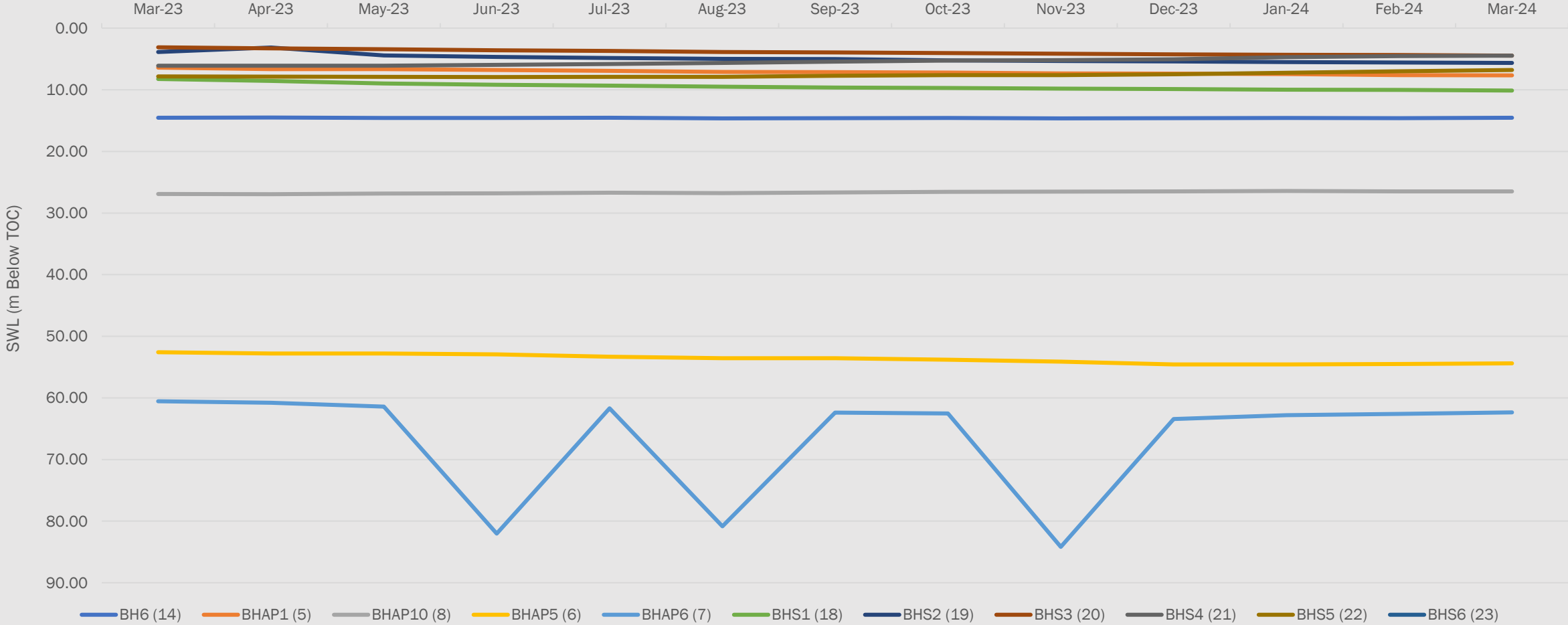
# Monitoring locations





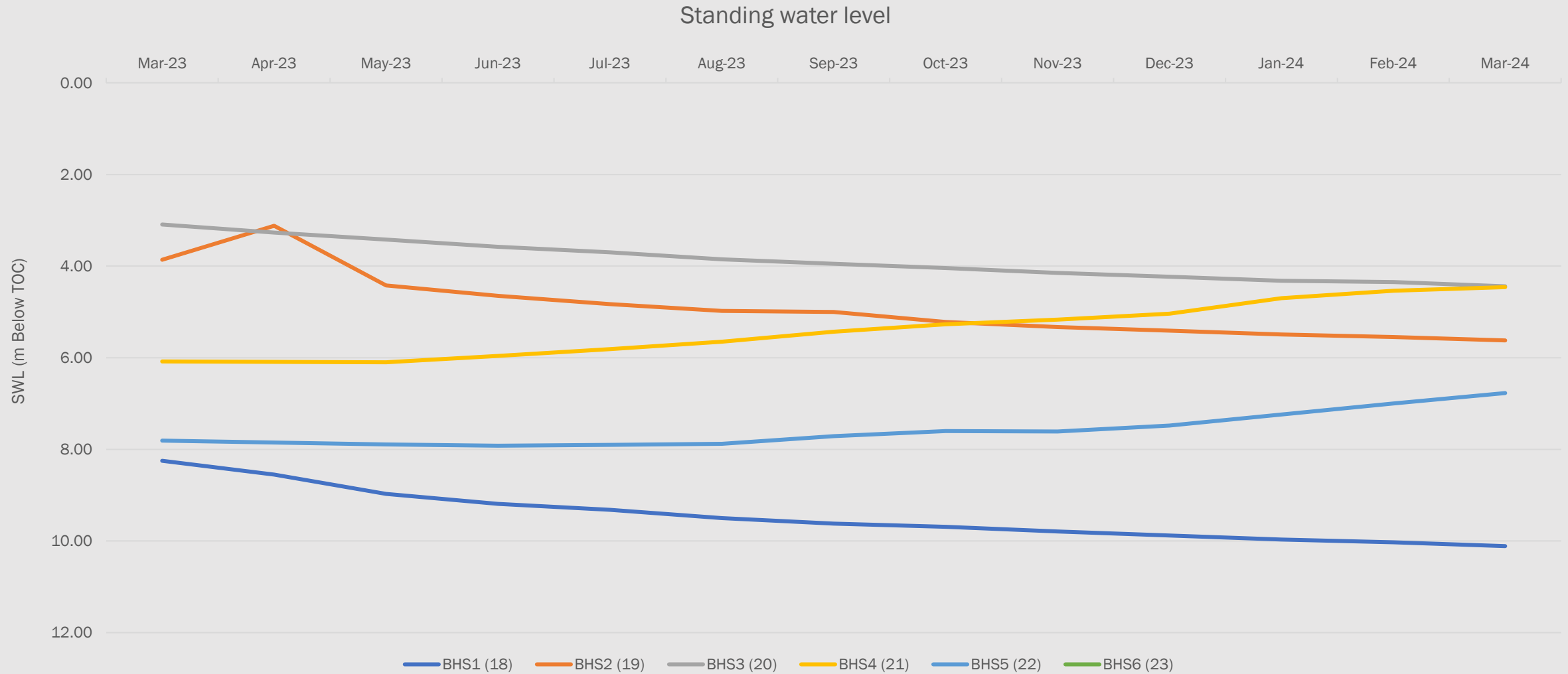
# Monitoring bores - standing water level (depth)

Standing water level



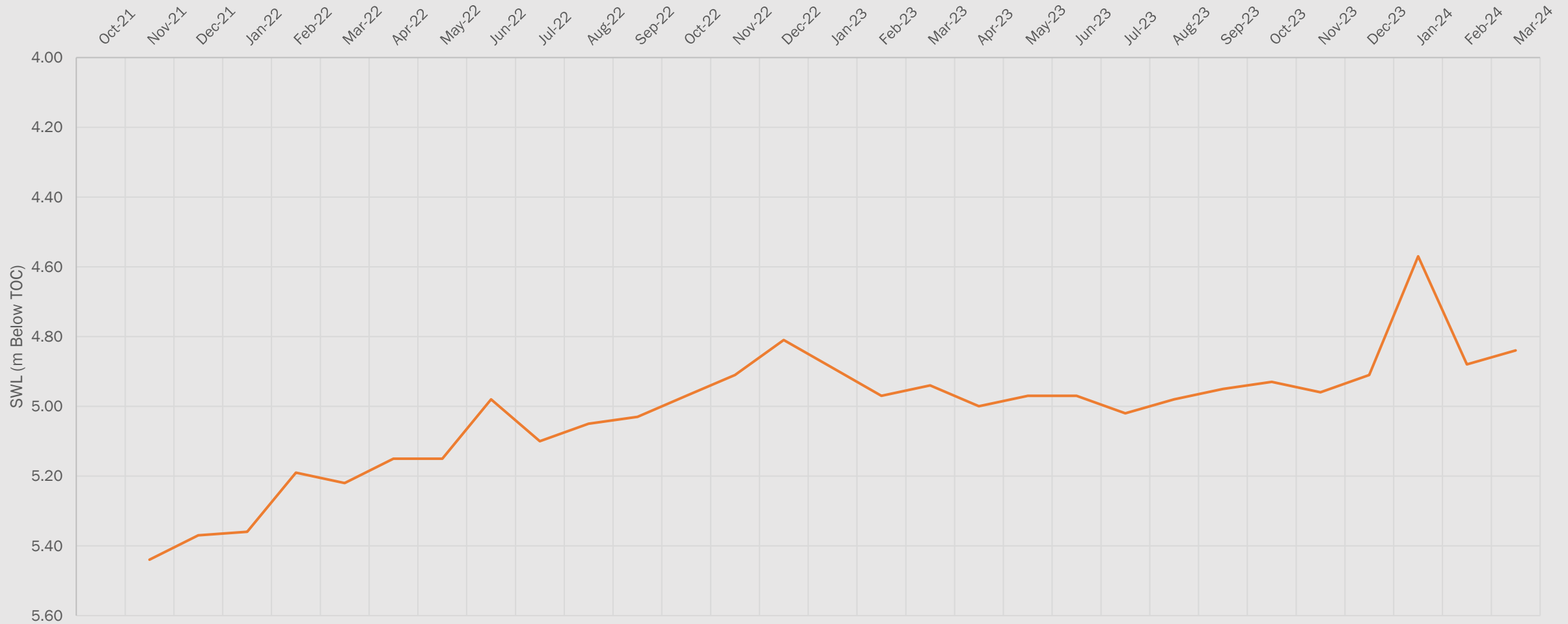
- Low BHAP6 readings impacted by use of pump during measurement

# Sand monitoring bores - standing water level



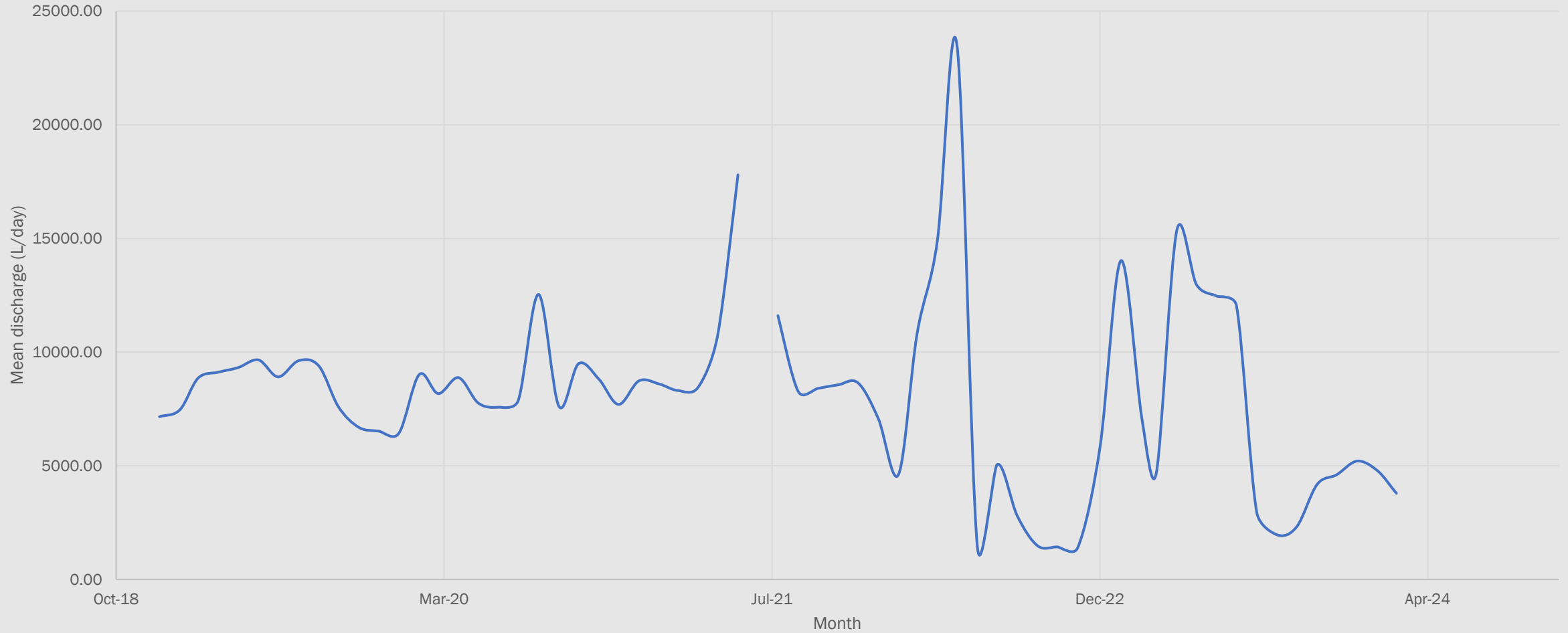
# Standing Water Level - Damar Lodge

Standing Water Level - Damar Lodge



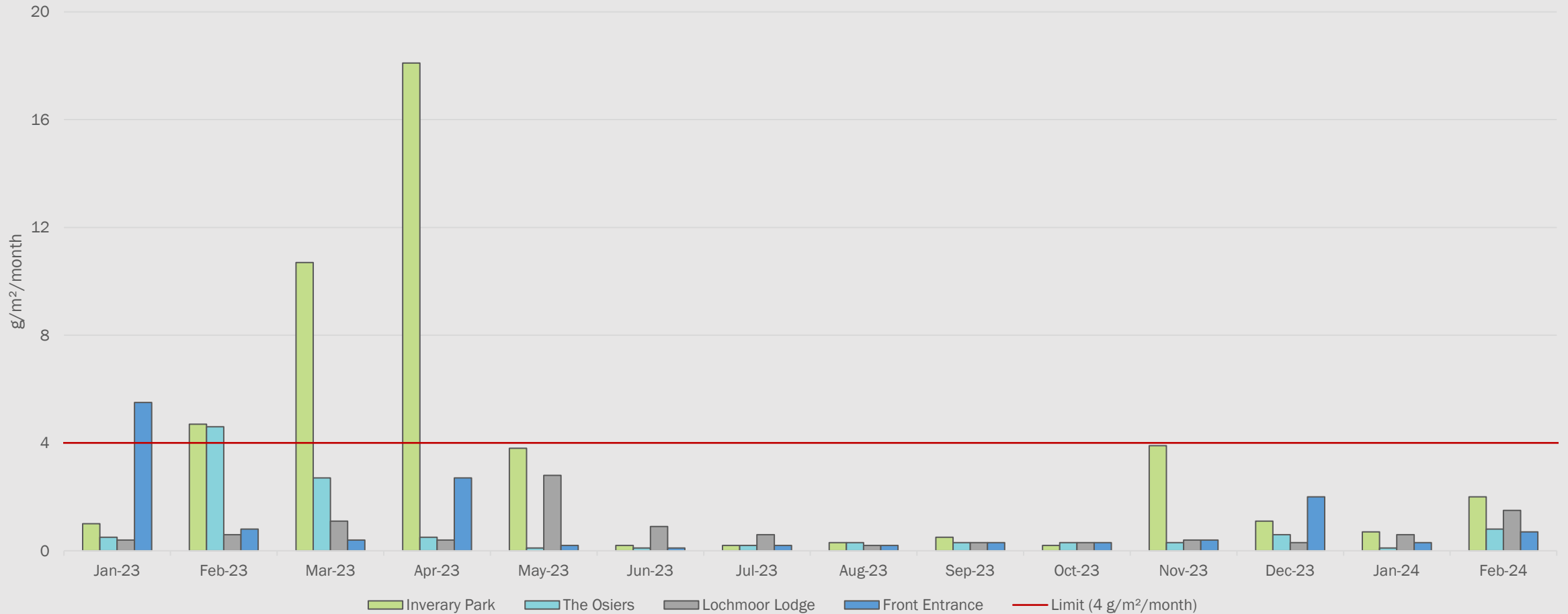
# Spring Flow - Inverary Park

Phils Spring 2019 - Present



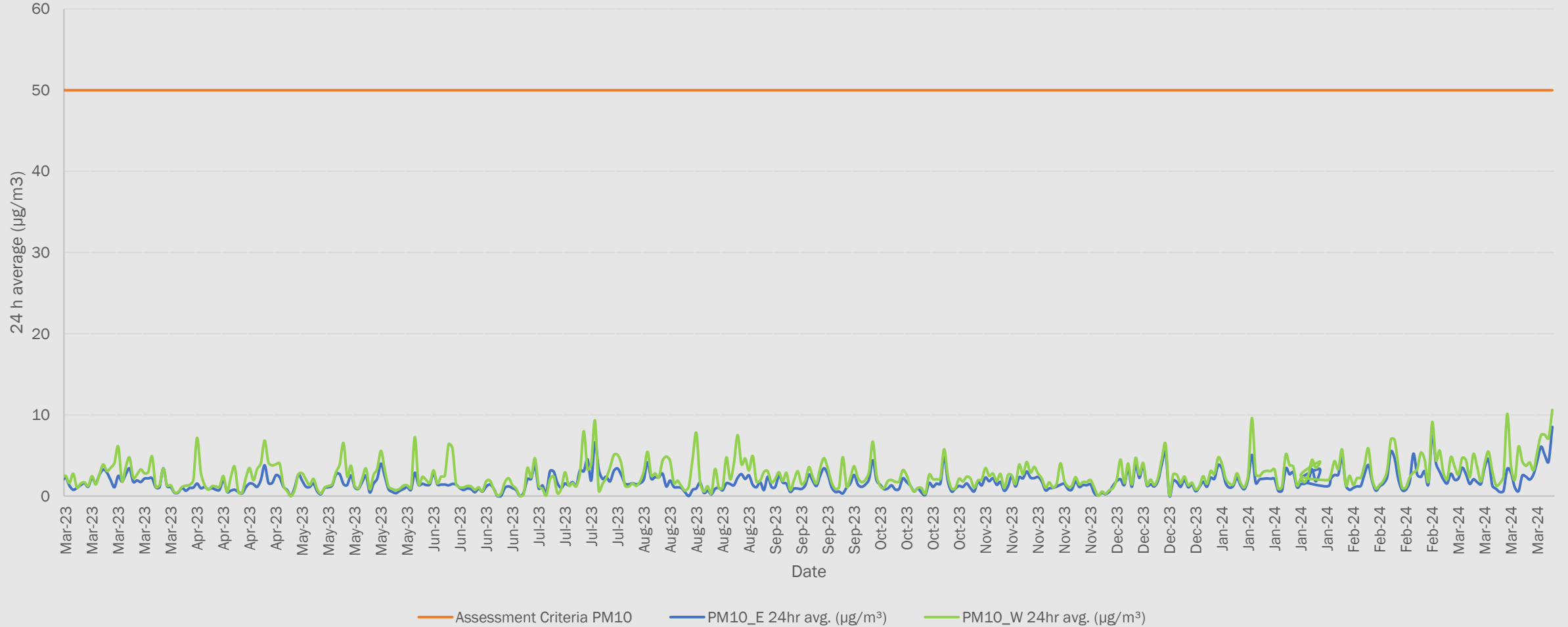
# Deposited dust (insoluble solids)

Insoluble Solids - 2023-2024



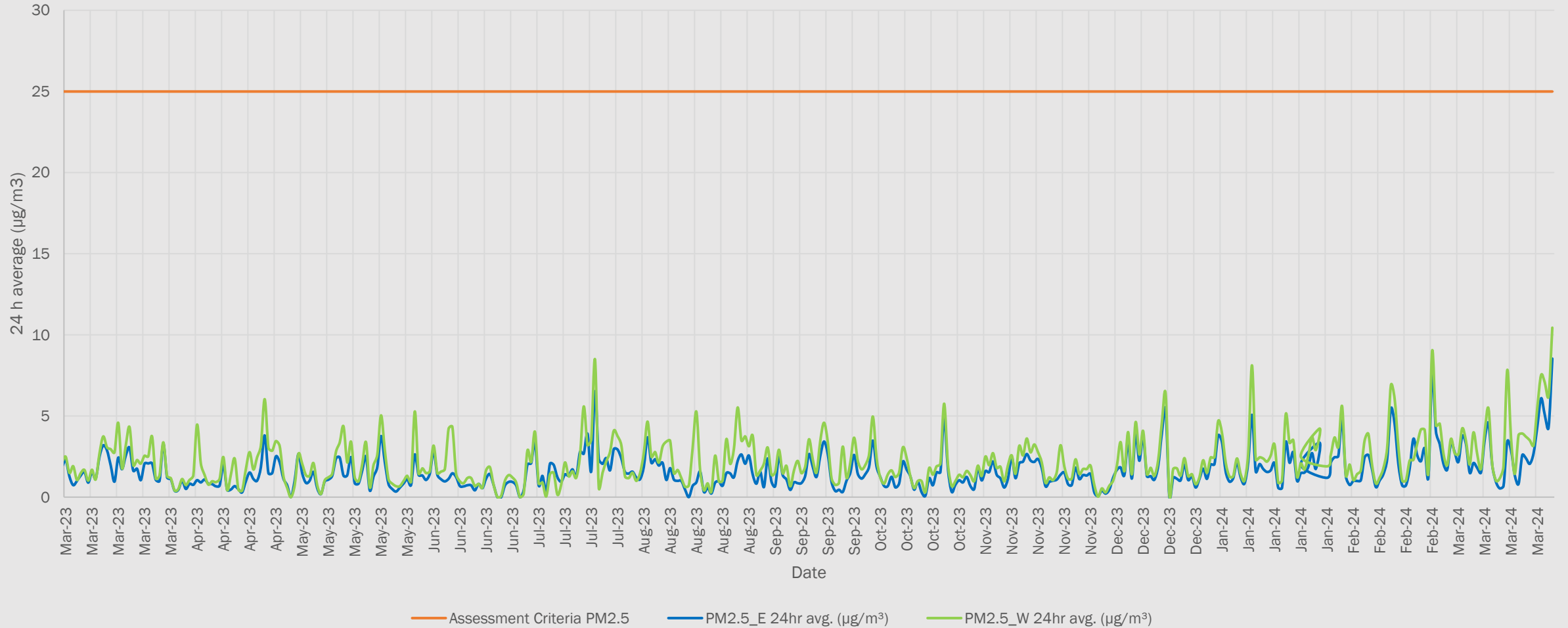
# Particulate matter - PM10 (IR Sensor)

PM10



# Particulate matter - PM2.5 (IR Sensor)

PM2.5



# Discharge trial



- Discharge trial extension ended in March.
- No negative impacts observed during trial and extension.
- Will apply for permanent discharge from EPA.
  - Intention to discharge small volumes as required, rather than continually.



# Dust Management Capacity Assessment



- EPL varied to include a Pollution Reduction Study for dust
- 4Pillars prepared the Dust Management Capacity Assessment as required
- Recommendations included:
  - Water cart or sprinkler suppression applied to active operation areas and material stockpiles in dry weather or dust generating conditions.
  - Installation of mechanical evaporator cannons at the hard rock processing area.
  - Installation of sprinkler systems along haul roads and at stockpiles.
  - Establishing a real-time alert system for the Particulate Matter Sensors.

# Complaints and feedback

Two noise complaints received since the December 2023 meeting

- Noted and actioned

